

Series G Potentiostat/Galvanostat/ZRA

Operator's Manual

includes both the

Series G 300 Potentiostat/Galvanostat/ZRA

and

Series G 750 Potentiostat/Galvanostat/ZRA

Limited Warranty

Gamry Instruments, Inc., warrants to the original user of this product that it shall be free of defects resulting from faulty manufacture of the product or its components for a period of two years from the date of shipment.

Gamry Instruments, Inc., makes no warranties regarding either the satisfactory performance of the Series G or the fitness of the instrument for any particular purpose. The remedy for breach of this Limited Warranty shall be limited solely to repair or replacement, as determined by Gamry Instruments, Inc., and shall not include other damages.

Gamry Instruments, Inc., reserves the right to make revisions to the Series G at any time without incurring any obligation to install same on instruments previously purchased. All instrument specifications are subject to change without notice.

There are no warranties which extend beyond the description herein. This warranty is in lieu of, and excludes any and all other warranties or representations, expressed, implied or statutory, including merchantability and fitness, as well as any and all other obligations or liabilities of Gamry Instruments, Inc., including but not limited to, special or consequential damages.

This limited warranty gives you specific legal rights and you may have others which vary from state to state. Some states do not allow for the exclusion of incidental or consequential damages.

No person, firm, or corporation is authorized to assume for Gamry Instruments, Inc., any additional obligation or liability not expressly provided herein except in writing duly executed by an officer of Gamry Instruments, Inc.

Disclaimers

Gamry Instruments, Inc., cannot guarantee that the Series G Potentiostat will work with all computer systems, operating systems, or third party expansion cards and peripherals.

The information in this manual has been carefully checked and is believed to be accurate as of the time of printing. However, Gamry Instruments, Inc., assumes no responsibility for errors that might appear.

Copyrights and Trademarks

Series G Potentiostat Operator's Manual Copyright© 1997-2011 Gamry Instruments, Inc. All rights reserved. Printed in the USA.

Gamry Framework Copyright© 1989-2011 Gamry Instruments, Inc.

PC4™, PCI4™, Series G™, Gamry Framework™, DC105™, EIS300™, and Gamry™ are trademarks of Gamry Instruments, Inc.

Windows™ is a trademark of Microsoft Corporation.

No part of this document may be copied or reproduced in any form without the prior written consent of Gamry Instruments, Inc.

If You Have Problems

Contact us at your earliest convenience. We can be contacted via:

Telephone	(215) 682-9330 8:30 AM - 6:30 PM US Eastern Standard Time
Fax	(215) 682-9331
Email	techsupport@gamry.com
Mail	Gamry Instruments, Inc. 734 Louis Drive Warminster, PA 18974 USA

If you write to us about a problem, provide as much information as possible.

If you are having problems with installation or use of your Series G Potentiostat, it would be helpful if you called from a phone near to your computer, where you can type and read the screen while talking to us.

We are happy to provide a reasonable level of free support for registered users of our products. Reasonable support includes telephone assistance covering the normal installation and use of the Series G in standard computer hardware.

We provide a two year warranty covering both parts and labor. A service contract that extends the warranty is available at an additional charge.

Enhancements to the Series G that require significant engineering time on our part may be available on a contract basis. Contact us with your requirements.

Table of Contents

Limited Warranty	ii
Disclaimers	iii
Copyrights and Trademarks	iii
If You Have Problems	iv
Chapter 1 -- Introduction	1-1
About This Manual.....	1-1
CE Compliance Required for Sale in Europe	1-1
About the Series G.....	1-2
Potentiostat Schematic Diagram	1-3
Notational Conventions.....	1-5
Chapter 2 -- Installation	2-1
Nomenclature –Series G versus PCI4	2-1
Computer Requirements	2-1
PCI Compatibility.....	2-2
Multiple Potentiostat Systems	2-2
Card Identification	2-2
Positional Conventions	2-2
Handling the Cards	2-3
Plug & Play System Configuration.....	2-3
Installing the Cards in Your Computer.....	2-4
Connecting the Interconnection Ribbon Cable.....	2-4
Connect Power to the Cards.....	2-4
Cell Cable Installation.....	2-5
1 st Time Device Installation in Windows	2-5
Multiple Potentiostat Systems	2-9
Device Manager.....	2-10
Authorization Codes and Label.....	2-11
Application Software Installation and System Checkout.....	2-11
Calibration.....	2-12
Chapter 3 -- Cell Cable Connections	3-1
Cell Indicator	3-1
Normal Cell Connections	3-1
ZRA Mode Cell Connections	3-2
Membrane Cell Connections	3-3
Chapter 4 -- Configuration of Master/Serf Systems.....	4-1
Master/Serf Mode Defined	4-1
MultEchem Systems Defined.....	4-1
Clocking in Master/Slave EIS Systems.....	4-1
Master/Serf Cable.....	4-2
Procedure For Clock Synchronization	4-2
Connections For Data Acquisition Synchronization	4-3
Chapter 5 -- Stability in Potentiostat Mode	5-1
Capacitive Cells and Stability.....	5-1
Improving Potentiostat Stability	5-2
Chapter 6 -- Measurement of Small Signals.....	6-1
Overview	6-1
Measurement System Model and Physical Limitations.....	6-1
Johnson Noise in Z_{cell}	6-2
Finite Input Capacitance	6-3

Leakage Currents and Input Impedance.....	6-3
Voltage Noise and DC Measurements	6-4
Shunt Resistance and Capacitance.....	6-4
Hints for System and Cell Design.....	6-5
Faraday Shield	6-5
Avoid External Noise Sources	6-5
Cell Cable Length and Construction.....	6-6
Lead Placement	6-6
Cell Construction	6-6
Reference Electrode	6-7
Instrument Settings.....	6-7
EIS Speed	6-7
Ancillary Apparatus	6-7
Floating Operation	6-7
Appendix A -- Series G 300 Specifications	7-1
Appendix B -- Series G 750 Specifications	7-3
Appendix C -- Changing Series G Settings.....	7-5
Overview	7-5
About the "GAMRY5.INI" File	7-6
Using Notepad to alter "GAMRY5.INI"	7-7
Removing a Potentiostat from an Existing System	7-7
Interrupt Level Setting	7-8
Register Address.....	7-8
Changing the Auxiliary Analog Output Scaling	7-8
Appendix D -- I/O Connections for the Series G	7-9
CE Compliance, EMI and Cable Shielding.....	7-9
Grounds and the Series G Potentiostat.....	7-9
The Cell Connector.....	7-10
Aux A/D Input.....	7-11
Control Signal Input	7-12
I Monitor Output	7-14
V Monitor Output	7-14
Miscellaneous I/O Connector	7-15
Appendix E – Auxiliary A/D Input Characteristics	7-17
Overview	7-17
Jumper Identification	7-17
Input Impedance Selection.....	7-18
Filter Selection	7-18
Aux A/D Specifications	7-18
Appendix F – IR Compensation	7-19
Current Interrupt.....	7-19
Positive Feedback	7-20
Appendix G – CE Certificate.....	7-21
Declaration of Conformity.....	7-21
Certificate of Conformance	7-22
Comprehensive Index	8-1

Chapter 1 -- Introduction

About This Manual

This manual covers the installation and use of the Series G Potentiostat/Galvanostat/ZRA. It includes information on both the Series G 300 Potentiostat/Galvanostat/ZRA and its cousin the Series G 750 Potentiostat/Galvanostat/ZRA. These instruments differ primarily in their output current: 300 mA for the Series G 300 and 750 mA for the Series G 750. Throughout this manual, the term Series G should be interpreted as a reference to both the Series G 300 and the Series G 750.

NOTE: The Gamry Instruments Series G, like the earlier PCI4, interfaces to a computer using the industry standard PCI bus. This manual does not discuss the older Gamry Instruments PC4 family of potentiostats, which used the ISA bus. The PC4 and Series G perform similarly, but the installation procedures and specifications between the older and newer instruments are different enough to make this document a poor reference for the PC4. Consult an earlier revision of this manual for PC4 information.

NOTE: The Series G is an improved version of the PCI4 – but it is still architecturally very similar to the PCI4. Gamry's software uses this similarity to minimize errors in system identification and configuration. The Series G is identified in Gamry's software as belonging to the PCI4 family of devices. Gamry uses the same basic driver software to communicate to the PCI4 and Series G. As a result, software will report a Series G as a PCI4 family device. This is normal and can be ignored.

This manual describes use of a Series G with Revision 5.1 (and later revisions) of the Gamry Framework software. It is equally useful when setting up a newly purchased potentiostat or modifying the setup of a older potentiostat for use with new software.

The bulk of Chapter 1 is an overview of the Series G's design and modes of operation. Chapter 2 contains Series G installation instructions. Chapter 3 describes cell cable connections. Chapter 4 describes Master/Serf operation, Chapter 5 covers the difficult issues of potentiostat stability and approaches to prevent oscillation. Chapter 6 discusses the realities of low current, high impedance measurements.

You will find dry technical material such as specifications and connector pin-outs in the Appendices.

This manual does not discuss software installation or operation.

Software support for the Series G is described in the Gamry's On-line Help system. All the Gamry Instruments' applications which run under the Gamry Framework control the Series G via a PSTAT object. See the Framework's On-line Help for information concerning PSTAT objects and their functions.

CE Compliance Required for Sale in Europe

The European Community has instituted standards limiting radio frequency interference from electronic devices and mandating several safety requirements. Gamry Instruments has modified its instruments to comply with these standards. We are shipping CE compliant instruments to all destinations.

The relevant CE regulations include EN 61010 and EN 61326.

About the Series G

The Series G Potentiostat is Gamry's fourth generation electrochemical instrument built using standard personal computer interface cards. It differs from the earlier PCI4 in a number of ways:

- It is built using modern, environmentally friendly, lead-free soldering.
- It's improved offset circuitry lowers drift in measured currents and voltages.
- Cross-talk between current and voltage measurements has been reduced.
- Overall power consumption has been lowered.
- New circuitry for Master/Slave operation improves system performance when used in a synchronized multi-potentiostat system.
- Analog I/O has been made more useful and easier to use.
- A new status LED on the controller card tell gives valuable information about instrument connections.
- DDS sine wave generation is no longer on a daughter card.
- Many portions of Gamry's low noise circuitry have been improved to have even lower noise.

Like it's predecessors, the Series G is a research grade electrochemical instrument compact enough to fit inside a desktop computer. It can operate as a potentiostat, a galvanostat, or a ZRA (zero resistance ammeter).

The Series G 300 and Series G 750 are two members of Gamry Instruments' PCI4 Potentiostat family. They share a number of characteristics with the other members of this family, especially in the areas of signal generation and signal preconditioning prior to A/D conversion.

The Series G features include 9 decade current auto-ranging, electrical isolation from earth ground, current interrupt iR compensation, and extensive filtering. A sine wave generator on the Series G allows its use for impedance measurements at frequencies up to 300 kHz.

The Series G consists of two printed circuit cards that install directly into a computer. Each card requires one expansion slot in an AT compatible computer. The cards are interconnected by one ribbon cable. Depending on the number of available slots, up to eight Series G card sets can be installed in one computer.

The first card is called the Potentiostat Card. It contains the analog potentiostat circuitry and its associated isolated power supply. This card is not connected to the computer's bus. It communicates with the computer over serial lines isolated by digital isolators (located on the other card). The Potentiostat card can be switched to act as a high performance Galvanostat or as a ZRA (Zero Resistance Ammeter).

The second printed circuit card will be referred to as the Controller Card. It contains a PCI bus interface, isolated serial transfer logic, an isolated power supply, a signal generator, and a high performance measurement system.

- The PCI bus interface communicates with most of the Series G circuitry using isolated serial lines. There is no ground connection between the PCI bus circuitry and the analog circuits in the Series G.
- Each card contains an isolated DC/DC converter. These power supplies convert the computer's 12 volt supply into the voltages needed to power their own circuitry.
- The standard "DC" signal generator on the Controller Card uses two 16 bit D/A converters. A DDS sine wave generator that generates low distortion sine waves is also built into the controller.

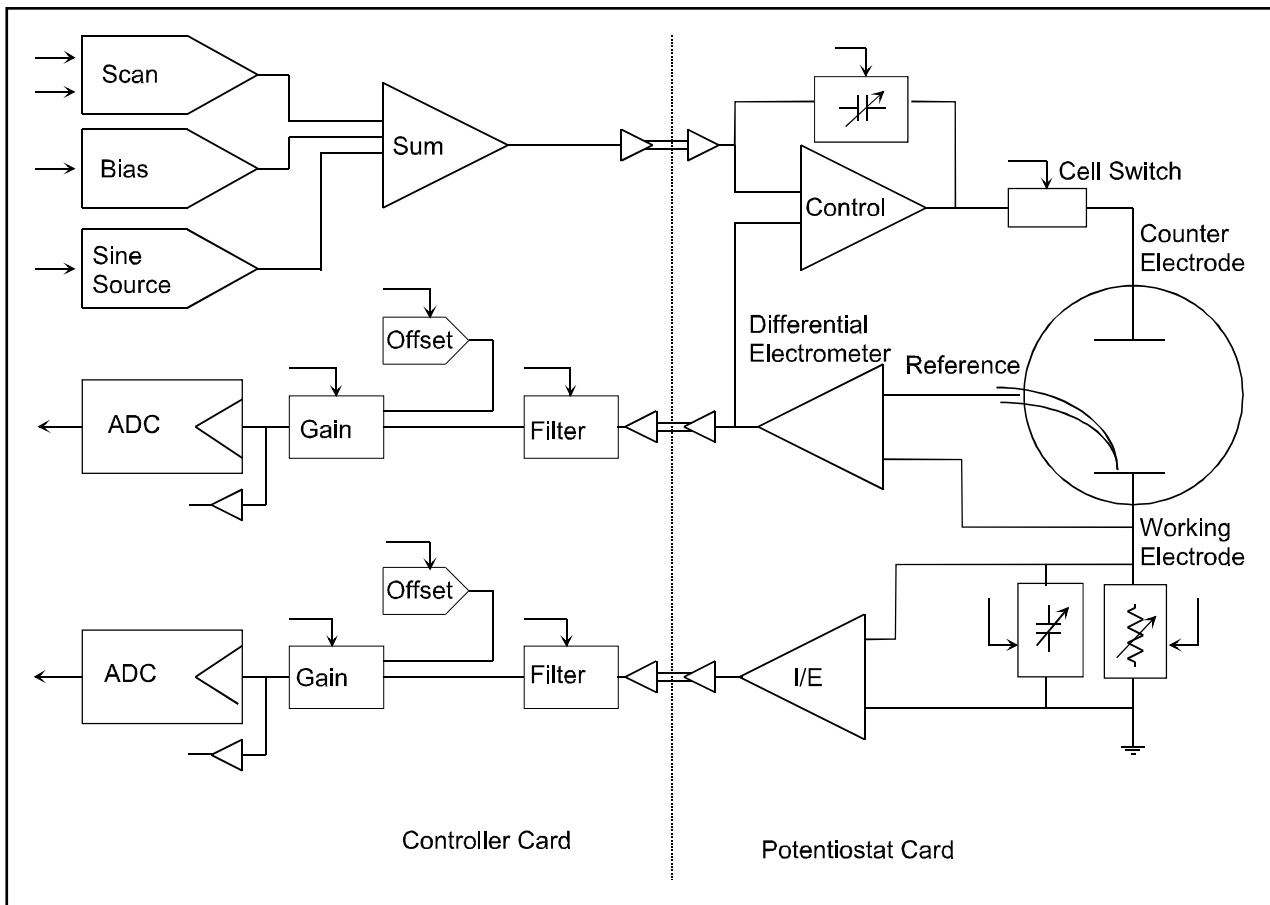
- The Controller Card measurement circuitry includes signal filtering, offset, and switchable gain on two independent measurement channels. The output of these channels is measured using a 16 bit A/D converter.

Potentiostat Schematic Diagram

If you are not familiar with electronic schematics or potentiostats, you probably want to skip this section. This information is for expert use only and is not required for routine use of the Series G Potentiostat.

Figure 1-1 is a highly simplified schematic diagram. It shows the analog portion of the Potentiostat in its potentiostatic control mode.

Figure 1-1
Series G Analog Circuits in Potentiostat Mode



A few points concerning this schematic:

- The circuits on the right side of the schematic are on the Potentiostat card and those on the left are on the Controller Card. The dotted line shows the separation between the two portions of the instrument. The analog signals sent between the portions are received in differential amplifiers to eliminate grounding problems.
- Arrows pointing into a circuit indicate a computer control input.
- The labels CE , RE and WE stand for counter electrode, reference electrode and working electrode respectively.
- There are two 16 bit D/A converters generating the computer controlled portion of the applied cell voltage.
- The I/E converter section shows a series resistor that measures the cell current. The circuit actually uses eight decade resistors that can be switched in under computer control.
- The cell switch is actually two switches in series - a relay for low leakage and a FET switch for fast response.
- The label OLP refers to overload protection.
- Gains and resistor values are not shown.
- Two capacitors can be switched across the I/E converter resistor. These capacitors are used for filtering and stability compensation.
- The control amplifier is shown at the upper right side of the schematic. Compensation capacitors can be switched across the control amplifier to adjust its bandwidth and improve potentiostat stability.
- The A/D converter is a 16 bit successive approximation type converter.
- Some analog circuits, including overload detection circuitry, positive feedback IR compensation, the auxiliary D/A converter, power circuits, and data acquisition controls are not shown.
- All digital circuits, including the AT bus interface, timers, state machines, opto-couplers, and digital I/O are not shown.
- Timing for both data acquisition and D/A update in the signal generator is controlled by a state machine working with a crystal oscillator generated clock. A busy processor in the computer cannot create timing jitter.

Notational Conventions

In order to make this manual more readable we have adopted some notational conventions. These are used throughout this manual and all other Gamry Instruments manuals.

- Numbered lists. A numbered list is reserved for step by step procedures, with the steps always performed sequentially.
- Bulleted List. The items in a bulleted list, such as this one, are grouped together because they represent similar items. The order of items in the list is not critical.
- File names and folders. Inside paragraphs, references to computer files and Windows folders will be capitalized and placed within quotes, for example: and "C:\FRAMEWORK\FRAMEWORK.EXE" and "WIN.INI".

Chapter 2 -- Installation

A Series G Potentiostat is only useful after it has been installed in a Windows™ compatible computer.

If you purchase a Series G in a system that includes both a computer and an applications software package, Gamry Instruments, Inc. will install the Series G (and the system software) to produce a "turn-key" system. You may ignore this chapter if you have purchased a turn-key system.

If you buy your own computer, add a Series G to an existing system, or move an old Series G to a new computer, you need to know how to install a Series G into a computer. Read on.

Software installation is discussed in the Installation Manual for each software package. It will not be discussed here.

Nomenclature –Series G versus PCI4

The Series G is an improved version of the PCI4 – but it is still architecturally very similar to the PCI4. During its development, it was known as the PCI4 G, which is a name that may show up on the boards.

Gamry's software uses this similarity to minimize errors in system identification and configuration. The Series G is identified in Gamry's software as belonging to the PCI4 family of devices. Gamry uses the same basic driver software to communicate to the PCI4 and PCI4 G. Differences between the instruments are automatically handled by the driver.

As a result, the software will report a Series G as a PCI4 family device. This is normal and can be ignored.

Computer Requirements

Before you install a Series G into your own computer you must make sure that your computer meets these simple requirements.

- A computer based on one of the Pentium™ family of Intel microprocessors or a 100% compatible processor from another vendor.
- One of the following Operating Systems: Microsoft® Windows XP Service Pack 2, Windows Vista®, or 7 is required. (See Gamry's website "www.gamry.com" if you have a newer Windows edition of Windows).
- Two unobstructed, full height (11 cm) PCI expansion slots for each Series G card set. Each slot must be capable of accepting a 26 cm long (10 inch) card.
- Up to 40 watts of power supply capacity for each Series G Card Set. This is in addition to the power normally drawn by your computer and its standard peripherals.
- One unused disk drive power connector. This connector, and a standard power splitter cable, is used to power the Series G cards.

Most of the Series G's power is drawn from the computer's +12 volt and +5 volt supplies. However, the Series G also requires a small amount (< 50 mA) of current taken from the computer's –12 volt supply.

Gamry's Windows application software packages may impose additional, more stringent requirements.

PCI Compatibility

The Series G has been designed for compatibility with Revision 2.2 of the PCI Specification. As described in that specification, it is a universal card, able to operate with either 3.3 volt and 5.0 volt PCI signaling levels.

The Series G does not draw power from the 3.3 volt supply pins on the PCI bus connector. It can therefore operate with older computers that did not provide 3.3 volts on the PCI bus. It should operate with all PCI computers compliant with Revision 2.0 and higher of the PCI Specification.

Multiple Potentiostat Systems

Gamry's current Framework software (Revision 5.1) allows a computer to operate several Gamry Instruments potentiostats simultaneously. These can include both Series G and older PCI4 family devices in the same computer. Contact our home office or your local sales representative if you need assistance configuring a system contain both PCI4 and Series G hardware.

Chapter 4 of this manual describes the new methods used to synchronize Series G instruments when multiple instruments will be used for simultaneous measurements.

Card Identification

A Series G Potentiostat consists of two full height, 26 cm long PCI compatible printed circuit boards. When you look at your Series G cards, you will notice that a large portion of one card is covered with a large black shield. This card is the Series G Potentiostat Card. The card without the shield is referred to as the Series G Controller Card.

Positional Conventions

Throughout this manual, reference will be made to positions on the Series G cards. In order to avoid confusion, we will define some conventions that describe positions on these cards.

Assume:

- The card in question is lying on a table in front of you.
- The component side of the card is up .
- The card edge (where the card plugs into the computer) is facing you.

Under these assumptions, Figure 2-1 illustrates our positional conventions.

Figure 2-1
Positional Conventions



Handling the Cards

The Series G cards, like most electronic components, are susceptible to damage from static discharges and connection to live circuits. Some elementary precautions should be taken when handling and installing these cards.

- The cards are shipped in anti-static bags. Leave them in these bags until you need to install or reconfigure them.
- Always turn off your computer before plugging in any card.
- If you need to leave a card out of its anti-static bag, lay the anti-static bag on a flat surface, then lay the card on top of the bag.
- Prior to handling the cards, you should momentarily ground yourself to eliminate any static charges on your body. A good way to accomplish this is to turn off your computer, then lightly touch your finger to an unpainted portion of the computer's metal chassis.
- Save the anti-static bags. You must use them if the cards are shipped while not installed in a computer. This includes occasions when the cards must be returned to Gamry Instruments, Inc. for repair.

Plug & Play System Configuration

The Series G Controller Card is completely compatible with the Windows Plug & Play configuration system. Unlike some of Gamry's older potentiostats, you don't need DIP switches to configure the card.

Like most Plug & Play hardware, it is best if you install the software for the Series G before you install the potentiostat hardware.

A Setup program will normally startup automatically when you place the Gamry Instrument Software CD into the CD drive on your computer. Consult Gamry's software installation manual if you need assistance accessing the Setup program or choosing options in its menus.

Installing the Cards in Your Computer

NOTE: Please review the discussion on **Handling the Cards** earlier in this chapter prior to proceeding.

Once again, it is best if you install Gamry's Framework software before you install the Series G hardware.

The following procedure is used to install the Series G cards in your computer.

1. Turn off your computer.
2. Following your computer manufacturer's instructions, open up the computer to expose its expansion card slots.
3. Locate an empty expansion slot that has a PCI interface. The slot must be at least 26 cm long.

If necessary, remove the retaining screw and slot cover (the 'L' shaped metal bracket) for this slot. Save the screw for use later.

4. Locate a second empty slot that is within 15 cm of the first. You may have to move some of your existing cards to get two suitable slots.

Again, remove the retaining screw and slot cover, saving the screw for use later.

5. Remove one card from its anti-static bag.
6. Plug this card into one slot. Make sure the card seats securely in the edge card connector on the motherboard. Secure the card in the slot using the screw from Step 3.

NOTE: All the gold fingers on the lower edge on this card must be in a motherboard edge connector.

7. Repeat steps 5 and 6 with the second card, locating it in the second slot.
8. Do not close up the computer yet.

Connecting the Interconnection Ribbon Cable

1. Locate the 26 pin headers (group of 26 pins) on both the Controller and Potentiostat cards. They are in the upper right hand side of each card.
2. Examine the ribbon cable that came with the Series G Potentiostat. Each end of this cable has a 26 pin connector on it. The two ends of the cable are identical and therefore interchangeable.
3. Plug one end of this ribbon cable into the 26 pin header on the Controller card.
4. Repeat step 3 using the other end of the cable and the header on the Potentiostat card. We recommend that the colored stripe on the cable faces the left side of both cards (nearest the metal bracket).
5. Carefully double check your work.

Connect Power to the Cards

- 1) Locate the Drive Power Splitter Cable. It has a large 4 pin connector on one end and two identical, smaller, 4 pin sockets on the other ends.

- 2) The larger connector on this cable mates with a “disk drive” power cable from the PC’s power supply. Locate an unused computer power cable and connect it to the Series G power cable.
- 3) Locate the power input connector on the upper left side on the Series G Controller card. Plug one of the smaller sockets on the power cable into this power input.

Note that the power cables can only mate in one direction. If the power cable will not plug into the Series G card, rotate the cable 180°

- 4) Locate the power input connector on the upper right side on the Series G Potentiostat card. Plug one of the smaller sockets on the power cable into this power input.

Note that the power cables can only mate in one direction. If the power cable will not plug into the Series G card, rotate the cable 180°.

- 5) Carefully double check your work.

Once this step is completed you may close up the computer.

Cell Cable Installation

The Cell Connector is a 9 pin female D connector on the Potentiostat card.

The standard cell cable has a 9 pin D connector on one end and a number of leads terminated with banana plugs on the other. The D connector end of the cable is connected to the Cell Connector on the Potentiostat card. The knurled screws on this cable should always be used to hold the cable in place.

Caution: Other PC functions can use female 9 pin D connectors. Make sure that your cell cable is plugged into the correct connector before making any connection to your cell.

1st Time Device Installation in Windows

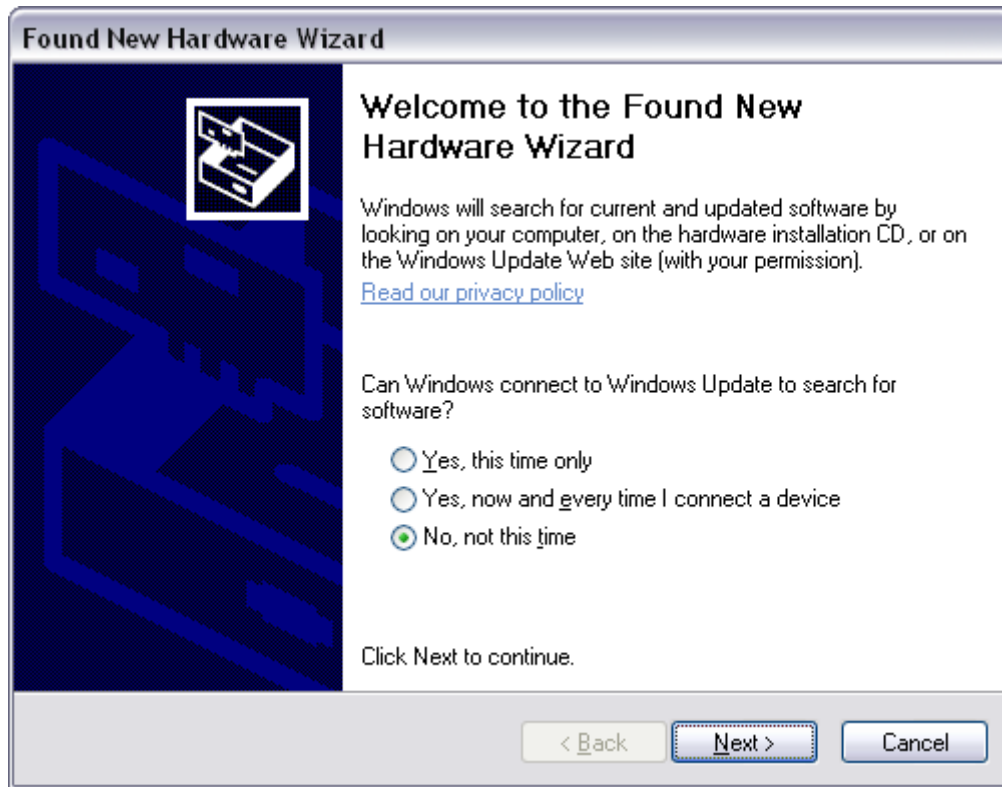
When a Series G is first connected to a computer running Windows, the Windows Plug and Play Manager will see the new device, but will be uncertain what device it is. The message that will appear is something like “New device found” or “Unknown PCI Bridge device Detected”.

When this occurs after you’ve plugged in a Series G instrument, tell Windows that you would like to install the new device.

Windows 7 Users: The following windows will not be displayed. Please skip to page 2-8 to continue the installation process.

All other users should see a screen that looks something like this:

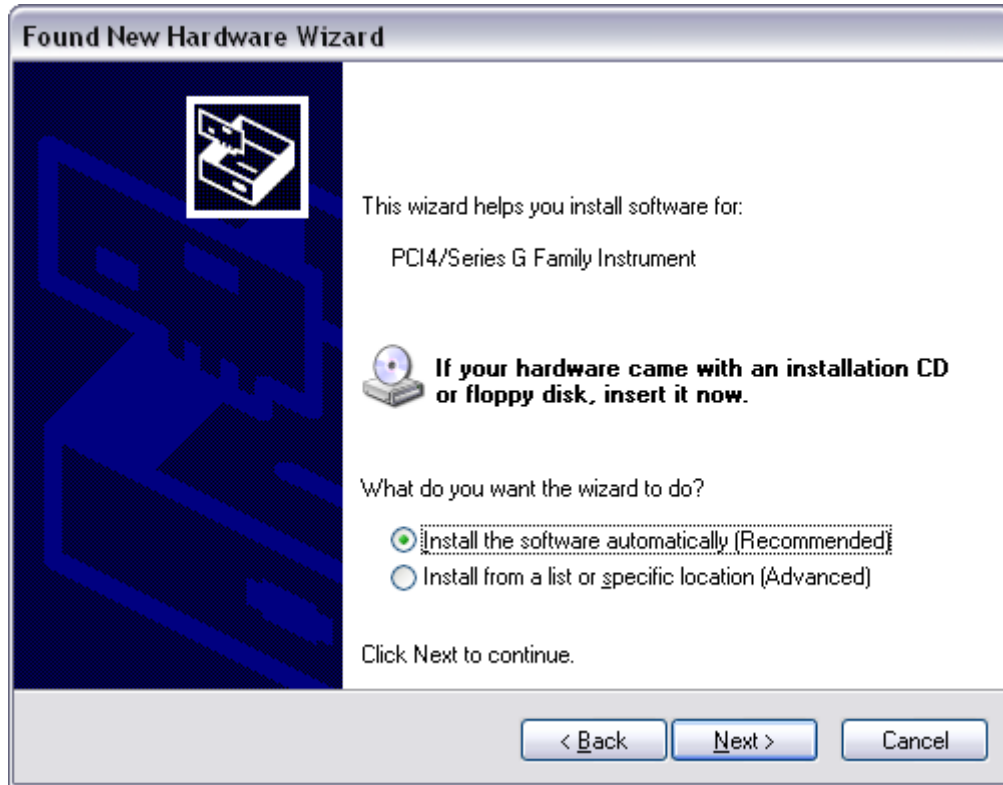
Figure 2 - 2
Welcome to the Found New Hardware Wizard



As shown in this Figure, do not choose to let Windows Update find the device driver that you need. The Windows Update web site has no knowledge of the Gamry Instruments Series G.

Make sure you select **No, not this time**. After you select, **Next**, you should see a screen that looks like this:

Figure 2-3
Install the Software Automatically



All Gamry device drivers are pre-installed to your machine during the software installation process. Select **Install the software automatically**, then select **Next**.

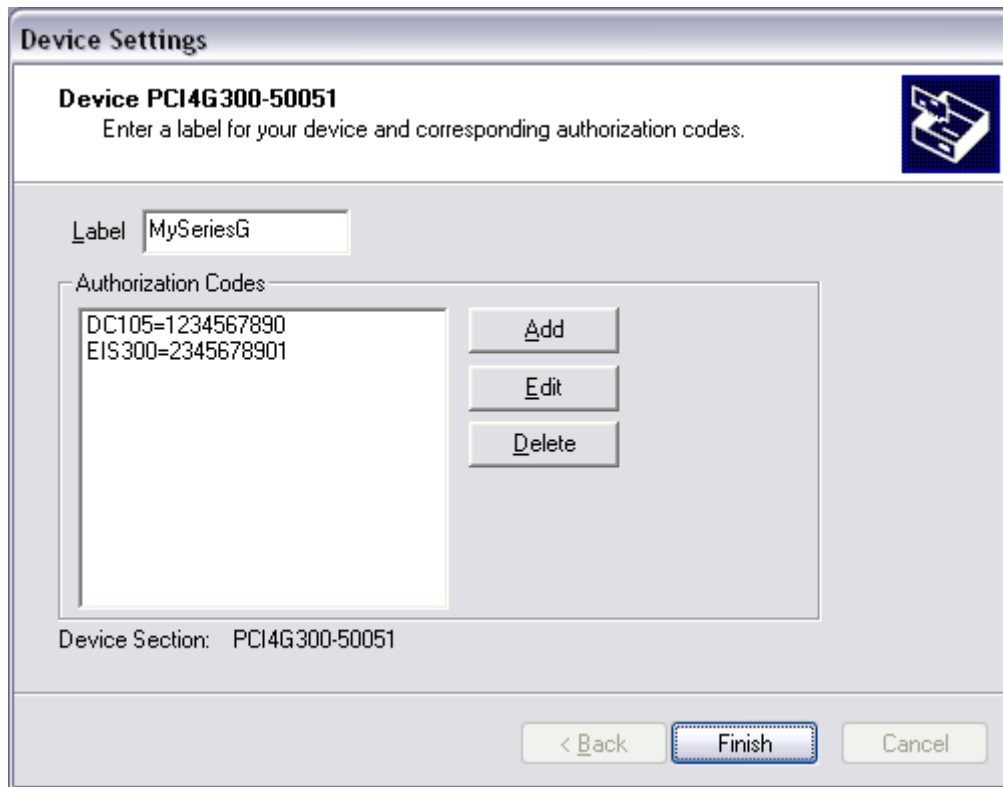
These messages will also be seen when a Series G instrument is moved to a new PCI slot. In this case, you can select **Install the software automatically** even if you do not have the Gamry Instruments CD. The driver that was previously installed on your computer's disk drive will be used.

The Windows Device Manger will locate and install the required files, which are already on your system.

Your Gamry Software CD is not required at this point. However, if you do not have your Gamry Software CD or lose the CD at any point, contact Gamry Instruments, or your local Gamry Sales representative for assistance.

Once the drivers and associated support files have to copied to your system, you should see another screen that looks like this:

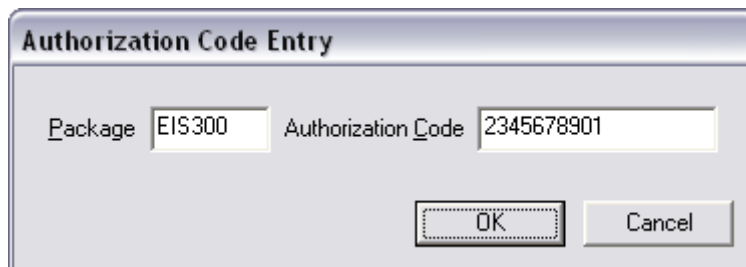
Figure 2-4
Install the Software Automatically



As displayed in Figure 2-4, you enter a friendly name for your Series G, as well as any Authorization Codes you received with your instrumentation. The authorization codes are 10 digit codes that allow different Gamry application software to be used with your Series G. If you cannot locate your authorization codes, please contact Gamry Instruments or your local Gamry Sales representative for assistance.

To enter an authorization code, simply click on the **Add** button. A dialog box will appear as shown in Figure 2-5. You enter the package name, like "EIS300", followed by the 10 digit authorization code.

Figure 2-5
Enter an Authorization Code



Press **OK** when you are finished.

Multiple Potentiostat Systems

Gamry's current Framework software (Revision 5.1) allows a single computer to operate up to 16 Gamry Instruments potentiostats simultaneously. The 16 potentiostats can include devices from the PCI4 family and the Reference Potentiostat family.

To install a system with multiple Series Gs, you just follow the hardware installation instructions (above) for each Series G.

If you need to operate the PCI4 G devices in a Master/Serf configuration that allows for synchronized data acquisition, consult Chapter 4 of this manual.

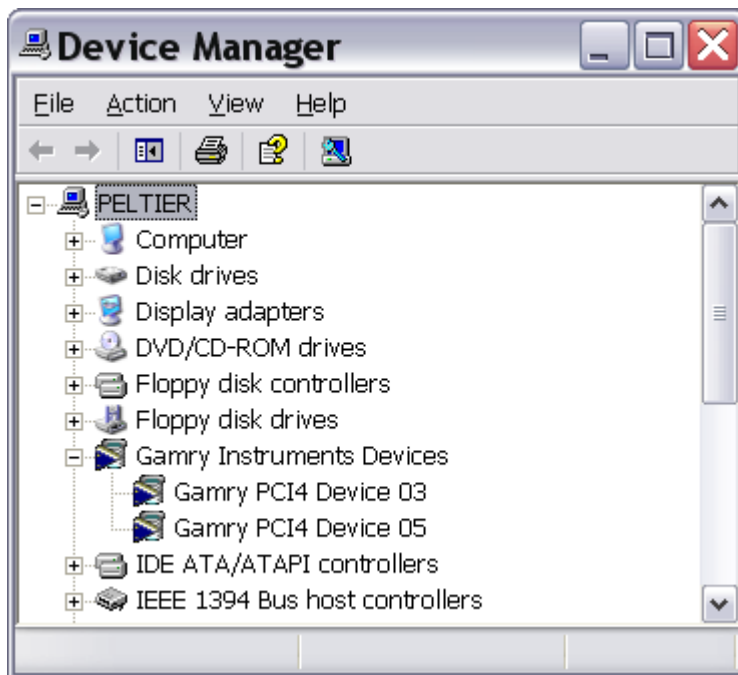
Contact our home office or your local Gamry Instruments representative if you need assistance configuring a system containing both PCI4 and Reference Family hardware.

Device Manager

If you wish to make changes to the configuration of your Series G after it has already been installed, you must use the Windows Device Manager. Steps for getting to the Device Manager can vary by operating system, so check your operating system's online help for more specific information on running the Windows Device Manager.

Under Windows XP, right clicking on the **My Computer** icon and selecting **Properties** brings up the **System Properties** dialog box. Select the **Hardware** Tab and then click on the **Device Manager** button. This should bring up the Device Manager screen. Clicking on the + sign next to **Gamry Instruments Devices**, should expand the tree view to give you a screen that looks similar to the following figure:

Figure 2-6
Device Manager Window



You can now right click on any of the Devices listed under **Gamry Instruments Devices** and select **Properties** to look at or change its configuration.

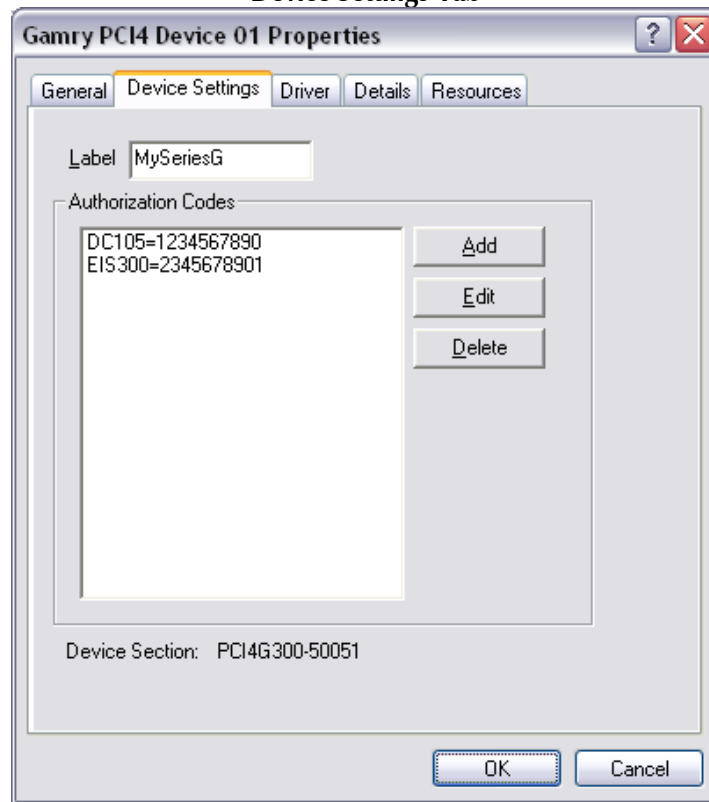
Note that the Series G is sufficiently similar to the PCI4 that it can share driver information.

Authorization Codes and Label

If you purchase additional Gamry application software, did not enter your authorization codes upon initial device installation, or simply need to make a correction to your authorization codes, you can do so using the Windows Device Manager.

You can also change the Label you use for your device. The Gamry Framework Application Software must first be closed before you can use the Device Manager to make changes. Next, you must select the appropriate device, as discussed in the Device Manager section. Once you have selected the appropriate device, right click and select **Properties**. Next, select **Device Settings** and you will see a screen that looks like Figure 2-7:

Figure 2-7
Device Settings Tab



You can enter or edit any of the authorization codes or Label for the device by clicking on the appropriate edit box and entering the information. When you are finished making changes press **OK** to store the changes.

Application Software Installation and System Checkout

Software installation is often slightly different for each Gamry Instruments, Inc. application package. Refer to the software installation instructions in the Installation Manual for each application package in your system.

You must calibrate each potentiostat in your system before you run any experiments or perform any of Gamry's System Checkout procedures.

After calibration, you should also perform the system checkout procedures for each application. Follow the instructions in each application's Installation Manual. The system checkout procedures check for correct hardware and software installation. They are not a comprehensive test of each facet of system operation.

Calibration

You must calibrate each Series G Potentiostat installed in your system. A calibration script is provided with the Gamry Framework. The Installation Manual for every major application package contains instructions for calibration using this script.

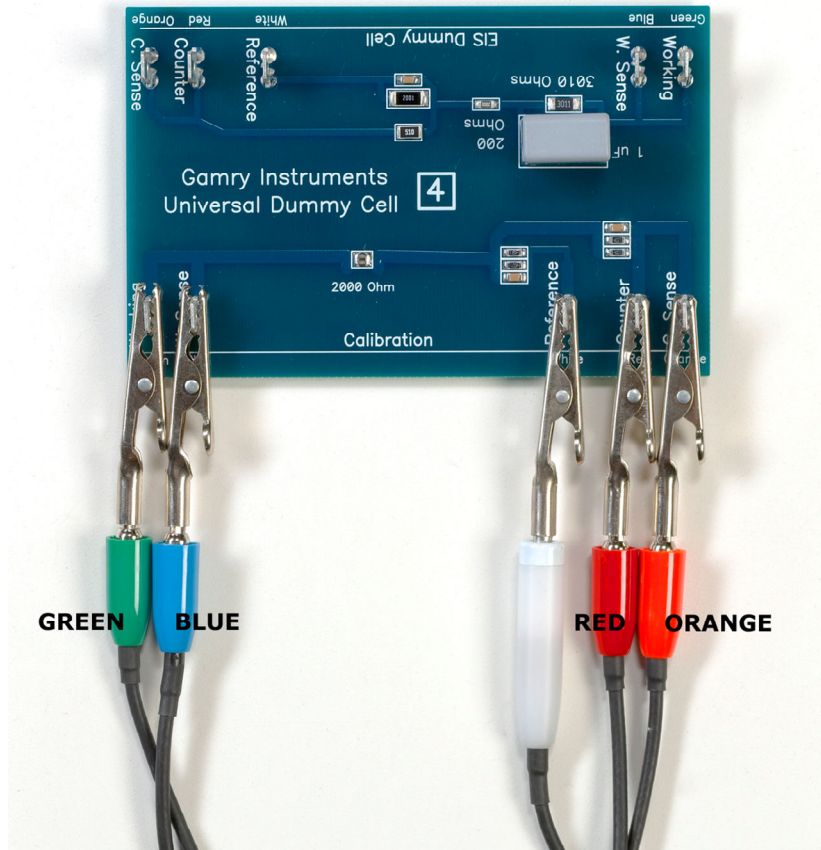
CAUTION: Series G calibration calls for an external resistive dummy cell. Every Series G is shipped with a Universal Dummy Cell 4 which includes a 2 k Ω , 0.05% accurate resistor in the position marked "Calibration". After calibration, please place this dummy cell in a safe place where you can find it if your unit requires recalibration.

If you do need to recalibrate and you cannot find the resistor shipped to you, you can substitute another 2 k Ω resistor. Its wattage is unimportant. Some performance checks in the calibration process may fail if the resistor's inaccuracy exceeds 0.1% (2 Ohms).

Potentiostat calibration is only required infrequently. You should recalibrate under the following circumstances:

- You are installing a Series G Potentiostat into a new computer or moving a Series G into a different computer. The Series G should be calibrated in the new machine.
- It has been about one year since your last calibration.
- Your potentiostat has been serviced.
- You notice breaks or discontinuities in the data curves recorded with your system.
- You have lost or replaced your "GAMRY5.INI" file.

Figure 2-8
UDC4 With Leads Attached for Calibration



Chapter 3 -- Cell Cable Connections

Cell Indicator

The Series G Potentiostat Card is equipped with a single yellow LED indicator, located just below the 9 pin Cell Connector. This LED functions as a Cell Indication. It lights whenever the Series G cell switch is on and goes dark whenever the cell is at open circuit. **Figure D-1** in the appendices is a picture of the rear panel of a computer demonstrating the location of this indicator.

Normal Cell Connections

Each Series G in your system was shipped with a standard cell cable.

One end of the cable ends in a 9 pin male D type connector. This end connects to the Series G Potentiostat Card. Make sure you connect the cable to the correct 9 pin connector on the computer.

You should always screw the cell cable into place, since this cable comes off the card easily otherwise.

The other end of the cell cable terminates in a number of banana plugs and one pin jack. Each termination comes with a removable alligator clip. Your Series G should be shipped with a newer cable that includes an Orange Counter Sense lead. If you also own an older PC3 Potentiostat or an older ECM8 Multiplexer, it was supplied with similar cables that do not include this orange lead. Consult the factory before using an older cable with your PCI4.

Table 3-1 identifies each terminal of the cable.

Table 3-1
Cell Cable Terminations - Potentiostat and Galvanostat Modes

Color	Type	Name	Normal Connection
Blue	Banana Plug	Working Sense	Connect to working electrode
Green	Banana Plug	Working Electrode	Connect to working electrode
White	Pin Jack	Reference	Connect to reference electrode
Red	Banana Plug	Counter Electrode	Connect to counter electrode
Orange	Banana Plug	Counter Sense	Used in ZRA mode - connect to counter electrode
Long Black	Banana Plug	Floating Ground	Leave open or connect to a Faraday shield
Short Black	Banana Plug	Chassis Ground	Connect to Faraday Shield to reduce EMI

Connect both the blue and green cell leads to the working electrode. The working electrode is the specimen being tested. The blue banana jack connection senses the voltage of the working electrode. The green working electrode connection carries the cell current. The working electrode may be as much as 1.5 volts above the circuit ground.

Connect the white pin jack to the cell's reference electrode, such as an SCE or Ag/AgCl reference electrode. The measured cell potential is the potential difference between the blue and white cell connectors.

Connect the red banana plug to the counter or auxiliary electrode. The counter electrode is usually a large inert metal or graphite electrode. The counter electrode terminal is the output of the Series G's power amplifier.

The orange lead is only used in ZRA mode where it senses the counter electrode potential (see following section). Automatic switching to ZRA mode is possible if this lead is connected to the counter electrode. If you will not be using ZRA mode, this lead can be left open as long as you insure that it will not short against any other electrode.

The longer black lead is connected on the Series G end to Floating Ground. This is the circuitry ground for the analog circuits in the Series G. In most cases, this terminal should be left disconnected at the cell end. When you do so, take care that it does not touch any of the other cell connections.

The shorter black lead is connected to the computer's chassis (earth) ground.

If your cell is a typical glass laboratory cell, all of the electrodes are isolated from earth ground. In this case, you may be able to lower noise in your data by connecting the longer black cell lead to a source of earth ground. The short black lead or a water pipe can be suitable sources of earth ground.

Caution: If any electrode is at earth ground, you must not connect the long black cell lead to earth ground. Autoclaves, stress apparatus, and field measurements may involve earth grounded electrodes.

If you are measuring very small currents, you will probably find that a metal enclosure completely surrounding your cell (a Faraday shield) significantly lowers measured current noise. This Faraday shield should be connected to the short black cell connector. If your electrodes are all isolated from ground, you should also connect the shield to the longer black lead.

The alligator clip on a cell connection can be removed to access the underlying banana plug or pin jack. If you need to permanently change the terminations on your cell cable, feel free to remove the banana plugs and replace them with your new termination. Gamry Instruments can provide additional standard or special cell cables.

In either potentiostatic or galvanostatic mode, if you do not have a reference electrode in your cell, the reference lead can be connected to the counter electrode for a two electrode experiment. The potential reading will be the difference between the counter electrode and the working electrode.

ZRA Mode Cell Connections

The Series G can function as a precision Zero Resistance Ammeter (ZRA). It maintains two metal samples at the same potential and measures the current flow between the samples. It can also measure the potential of the samples versus a reference electrode.

The cell cable connections for ZRA mode are shown in Table 3-2. Note that the connections are very similar to those for the potentiostat and galvanostat modes. A second working electrode is substituted for the counter electrode and the orange counter sense lead must be connected.

Table 3-2
Cell Cable Connections for ZRA Mode

Color	Type	Name	Normal Connection
Blue	Banana Plug	Working Sense	Connect to metal sample #1
Green	Banana Plug	Working Electrode	Connect to metal sample #1
White	Pin Jack	Reference	Connect to a reference electrode
Red	Banana Plug	Counter Electrode	Connect to metal sample #2
Orange	Banana Plug	Counter Sense	Connect to metal sample #2
Long Black	Banana Plug	Floating Ground	Leave open or connect to a Faraday shield
Short Black	Banana Plug	Chassis Ground	Connect to Faraday Shield to reduce EMI

The counter sense and the working sense lead are each connected to different metal samples. In the ZRA mode the Series G is programmed to maintain zero volts between these leads. It therefore maintains the two metal samples at the same voltage.

The white pin jack on the cell cable is normally connected to a reference electrode. The potential between this lead and the working sense lead is reported as the cell potential.

In ZRA mode, if you don't have a reference electrode in your cell, we recommend that you connect the white reference lead to the working electrode. In theory, the measured potential will be exactly zero when this is done. In practice, A/D noise and offset will create a small, almost noiseless signal very close to zero.

Membrane Cell Connections

The Series G can be used with membrane cells. In this type of cell, a membrane separates two electrolyte solutions. Two reference electrodes are used - one in each electrolyte. Each electrolyte also contains a counter electrode. The Series G controls the potential across the membrane. Table 3-3 shows the cell connections used with a membrane type cell.

Table 3-3
Cell Cable Connections for a Membrane Cell

Color	Type	Name	Normal Connection
Blue	Banana Plug	Working Sense	Connect to reference electrode #1
Green	Banana Plug	Working Electrode	Connect to counter electrode #1
White	Pin Jack	Reference	Connect to reference electrode #2
Red	Banana Plug	Counter Electrode	Connect to counter electrode #2
Orange	Banana Plug	Counter Sense	Leave open (only needed in ZRA mode)
Long Black	Banana Plug	Floating Ground	Leave open or connect to a Faraday shield
Short Black	Banana Plug	Chassis Ground	Connect to Faraday Shield to reduce EMI

Note that reference electrode #1 and counter electrode #1 must be on one side of the membrane and reference electrode #2 and counter electrode #2 must be on the other side.

Chapter 4 – Configuration of Master/Serf Systems

Master/Serf Mode Defined

Many users want to synchronize the operation of multiple potentiostats. They want a single script to simultaneously run several potentiostats, with all the data acquired by the potentiostats taken at the same time.

Gamry Instruments has chosen to call this mode of operation Master/Serf mode. One potentiostat is the system operates as the Master. He is responsible for initiating the acquisition of data points. Serf potentiostats only take data when told to do so by a Master.

Master/Serf mode always requires additional cabling between the potentiostats. In systems built around the Series G, the extra cabling is inside the computer. In other systems, external connections are required.

Master/Serf mode also requires special Master/Serf scripts.

Note that potentiostats in a Series G Master/Serf capable system will also work fine when run in a standalone manner - using a separate standard Framework script for each experiment being run. This is generally not true for Master/Serf systems built using other Gamry potentiostats, because cabling changes are required when switching between Master/Serf and Standalone modes.

MultEchem Systems Defined

There can be confusion between the terms MultEchem and Master/Serf. In reality, they refer to completely different things.

Gamry's MultEchem systems use a special authorization scheme to lower systems costs – all potentiostats in a MultEchem system share one copy of the Gamry software. Potentiostats in a MultEchem system may be run in Master/Serf mode, or they may be run separately.

Clocking in Master/Slave EIS Systems

EIS is a particularly difficult electrochemical application. It requires very precise timing of data acquisition to avoid phase errors. An timing error of one 8 MHz clock period causes a 13.5° phase error in a 300 kHz EIS measurement.

To avoid phase errors in EIS, the Series G can synchronize the clocks that operate all the circuitry in a multi-potentiostat system. A 16 MHz clock on each card operates the timer that controls data acquisition and also operates the DDS circuitry that generates sine wave for EIS.

In a clock synchronized Series G system, one Series G is designated as the Clock Master. This Series G is connected to the Master end of the systems Master/Serf cable. Serf Clock jumpers are inserted on the Controller Cards of all the other potentiostats in the system. This jumper disables the internal clock 16 MHz on these units and substitutes a 16 MHz clock signal sent from the Clock Master through the Master/Serf cable.

CAUTION: Use clock synchronization with care. Series G cards jumpered as Clock Serfs must be cabled to a Clock Master or they will not operate. All computers that we have tested for this error have been unable to boot when containing an improperly clocked Series G.

This error condition is particularly common when one potentiostat is removed from a multi-potentiostat system.

Clock synchronization is not required for Master/Serf systems that do not run EIS experiments, so Gamry only recommends that you use it when you require high quality, high frequency EIS data from a Master/Serf system.

Master/Serf Cable

The Master/Serf cable for the Series G is an internal cable that runs from the Controller Card of the Master to the Controller Card of a Serf. The Master end of the Cable is clearly marked.

Additional segments of the cable can connect the first Serf to a second Serf, the second Serf to the third Serf, and so on.

The signals transmitted down the cable are the Master's 16 MHz clock and the Master's data acquisition pulse.

The Master/Serf connector is located on the upper left corner of the Controller Card. It is labeled as J400.

Procedure For Clock Synchronization

The system cabling is identical to that used in data acquisition synchronized system (except that clock synchronization requires that jumpers are added to Clock Serfs).

Configuration jumpers are generally available at most computer stores. Contact your local Gamry representative if you are unable to obtain suitable jumpers.

- 1) Connect the Master end of the Master/Serf cable to J400 of the Controller Card that will be the timing Master.
- 2) Connect the next available connector on the Master/Serf cable to the first (or next) serf.
- 3) Add a jumper at J402 on the Serf Controller Card.
- 4) Repeat steps 2 and 3 for any additional timing Serfs in the system.

Notes:

- The clock timing chain must be continuous. All connectors on the Master/Serf cable between the Timing Master and the final Serf Controller Card must be plugged into a Controller Card.
- All timing Serfs must have a jumper installed at J402. Once this jumper is installed, the card will not operate without a connection to a timing Master.
- The Timing Master must not have a jumper installed at J402.
- Contact Gamry Instruments (email techsupport@gamry.com) if you need a longer Master/Serf cable.

Connections For Data Acquisition Synchronization

The system cabling is identical to that used in a clock synchronized system (except no jumper changes are required).

- 1) Connect the Master end of the Master/Serf cable to J400 of the Controller Card that will be the data acquisition Master.
- 2) Connect the next available connector on the cable to the first (or next) serf.
- 3) Repeat step 2 for any additional timing serfs in the system.

The data acquisition timing chain must be continuous. All connectors on the Master/Serf cable between the data acquisition Master and the final Serf Controller Card must be plugged into a Controller Card.

Master/Serf data acquisition requires both these cable connections and a script written for Master/Serf operation. All Serfs in the system must be connected to a Master located toward the Master end of a Master Serf cable.

The Master and Serfs in the script must be in sequence on the Master/Serf cable. The Master can be part way down the chain.

For example, a four potentiostat Master/Serf system can be connected by a single cable connected from Pstat 1 (the Master), to Pstat 2, then to Pstat 3 and finally to Pstat 4. A two potentiostat Master/Serf script can be run with any of these combinations:

- Pstat 1 as the Master and Pstat2 as the Serf
- Pstat 2 as the Master and Pstat3 as the Serf
- Pstat 3 as the Master and Pstat4 as the Serf

All other combinations are invalid. Note that two Master/Serf scripts can be run simultaneously – one using PStat1 and PStat 2 and the second using PStat3 and Pstat4.

Once again, contact Gamry Instruments (email techsupport@gamry.com) if you need a longer Master/Serf cable.

Chapter 5 -- Stability in Potentiostat Mode

Capacitive Cells and Stability

All potentiostats can become unstable when connected to capacitive cells. The capacitive cell adds phase shift to the potentiostat's feedback signal (which is already phase shifted). The additional phase shift can convert the potentiostat's power amplifier into a power oscillator. To make matters worse, almost all electrochemical cells are capacitive because an electrical double layer forms next to a conductor immersed in a solution.

Potentiostat oscillation is an AC phenomenon. However, it can affect both AC and DC measurements. Oscillation often causes excessive noise or sharp DC shifts in the system's graphical output. The Series G Potentiostat is often stable on less sensitive current ranges and unstable on more sensitive current ranges. Whenever you see sharp breaks in the current recorded on the system, you should suspect oscillation.

The Series G has been tested for stability with cell capacitors between 10 pF and 0.1 F. In all but its fastest control amp speed setting, it is stable on any capacitor in this range -- as long as the impedance in the reference electrode lead does not exceed 20 k Ω . With reference electrode impedances greater than 20 k Ω , the Series G may oscillate. The RC filter formed by the reference electrode impedance and the reference terminal's input capacitance filters out the high frequency feedback needed for potentiostat stability.

Longer cell cables make the problem worse by increasing the reference terminal's effective input capacitance.

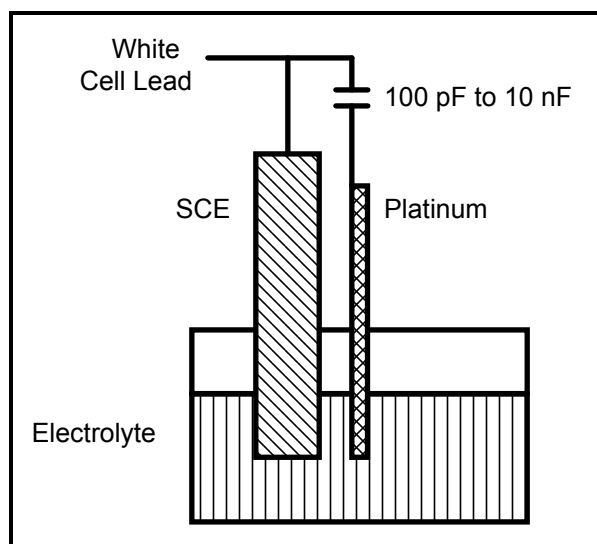
Even when the system is stable (not oscillating), it may exhibit ringing whenever there is a voltage step applied to the cell. The Series G's D/A converters routinely apply steps, even when making a pseudo-linear ramp. While this ringing is not a problem with slow DC measurements, it can interfere with faster measurements. The steps taken to eliminate potentiostat oscillation also help to minimize ringing.

Improving Potentiostat Stability

There are a number of things that you can do to improve an unstable or marginally stable Series G potentiostat/cell system. This list is not in any particular order. Any or all of these steps may help.

- Slow down the potentiostat. The Series G has 4 control amplifier speed settings which can be selected in software. Slower settings are generally more stable.
- Increase the Series G's I/E stability setting. The Series G includes 2 capacitors that can be paralleled with its I/E converter resistors. These capacitors are connected to relays that are under software control. Contact your local Gamry Instruments' representative for more information concerning changes in these settings.
- Lower the reference electrode impedance. Make sure that you don't have a clogged reference electrode junction. Avoid asbestos fiber reference electrodes and double junction electrodes. Avoid small diameter Lugin capillaries. If you do have a Lugin capillary, make sure that the capillary contents are as conductive as possible.
- Add a capacitively coupled low impedance reference element in parallel with your existing reference electrode. The classic fast combination reference electrode is a platinum wire and a junction isolated SCE. See Figure 5-1. The capacitor insures that DC potential comes from the SCE and AC potential from the platinum wire. The capacitor value is generally determined by trial and error.

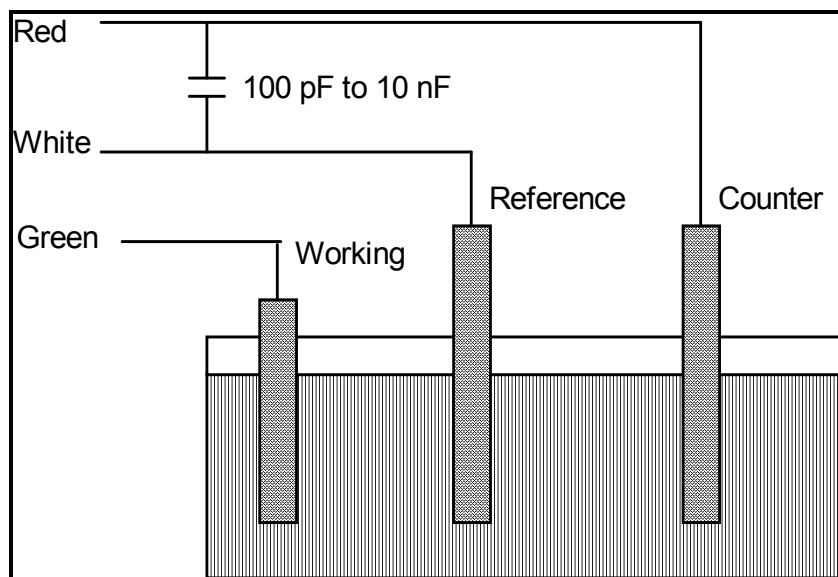
Figure 5-1
Fast Combination Reference Electrode



- Provide a high frequency shunt around the cell. A small capacitor between the red and white cell leads allows high frequency feedback to bypass the cell. See Figure 5-2. The capacitor value is generally determined by trial and error. One nanofarad is a good starting point.

In a sense, this is another form of an AC coupled low impedance reference electrode. The counter electrode is the low impedance electrode, eliminating the need for an additional electrode in the solution.

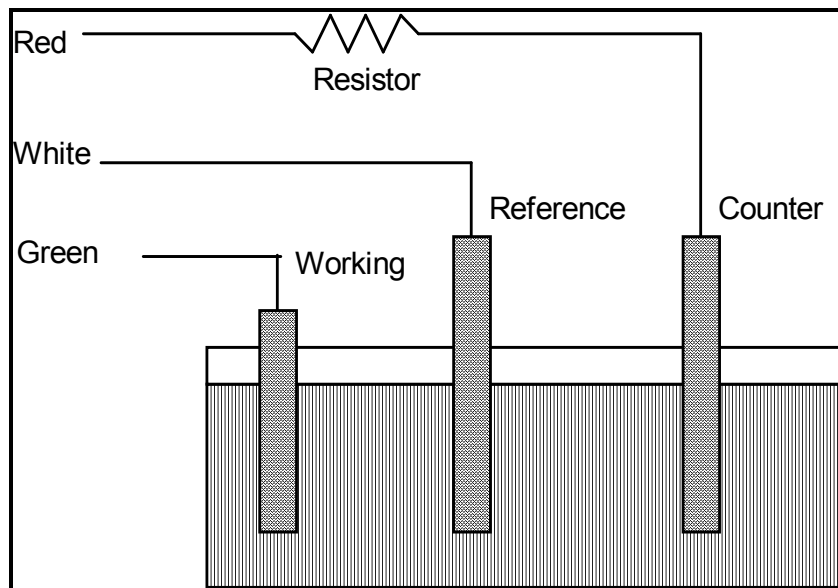
Figure 5-2
High Frequency Shunt



- Add resistance to the counter electrode lead. See Figure 5-3. This change raises the effective gain of the control amplifier, moving it away from the dangerous unity gain frequency. As a rule of thumb, the resistor should be selected to give one volt of drop at the highest current expected in the test being run. For example, if you expect your highest current to be around 1 mA, you can add a 1 k Ω resistor.

This resistor has no effect on the DC accuracy of the potentiostat. It can create problems in high speed experiments such as fast CV scans or EIS, which need high bandwidth.

Figure 5-3
Resistor Added for Stability



Chapter 6 -- Measurement of Small Signals

Overview

The Series G is a sensitive scientific instrument. It can resolve current changes as small as 0.01 picoamps (10^{-14} amps). To place this current in perspective, 0.01 pA represents the flow of about 60,000 electrons per second!

The small currents measured by the Series G place demands on the instrument, the cell, the cables and the experimenter. Many of the techniques used in higher current electrochemistry must be modified when used to measure pA currents. In many cases, the basic physics of the measurement must be considered.

This chapter will discuss the limiting factors controlling low current measurements. It will include hints on cell and system design. The emphasis will be on EIS (Electrochemical Impedance Spectroscopy), a highly demanding application for the Series G.

Measurement System Model and Physical Limitations

To get a feel for the physical limits implied by picoamp measurements, consider the equivalent circuit shown in Figure 6-1. We are attempting to measure a cell impedance given by Z_{cell} .

This model is valid for analysis purposes even though the real Series G circuit topology differs significantly.

In Figure 6-1:

E_s	Is an ideal signal source
Z_{cell}	Is the unknown cell impedance
R_m	Is the current measurement circuit's current measurement resistance
R_{shunt}	Is an unwanted resistance across the cell
C_{shunt}	Is an unwanted capacitance across the cell
C_{in}	Is the current measurement circuit's stray input capacitance
R_{in}	Is the current measurement circuit's stray input resistance
I_{in}	Is the measurement circuit's input current

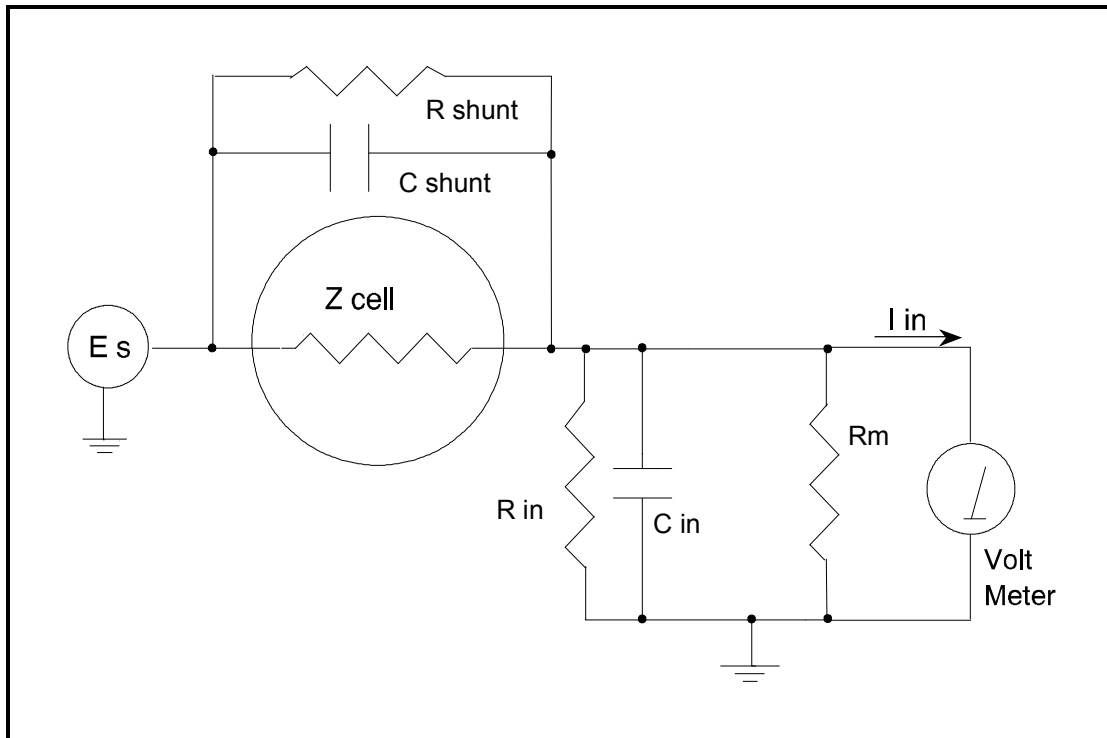
In the ideal current measurement circuit R_{in} is infinite while C_{in} and I_{in} are zero. All the cell current, I_{cell} , flows through R_m .

With an ideal cell and voltage source, R_{shunt} is infinite and C_{shunt} is zero. All the current flowing into the current measurement circuit is due to Z_{cell} .

The voltage developed across R_m is measured by the meter as V_m . Given the idealities discussed above, one can use Kirchoff's and Ohms law to calculate Z_{cell} :

$$Z_{\text{cell}} = E_s * R_m / V_m$$

Figure 6-1
Equivalent Measurement Circuit



Unfortunately technology limits high impedance measurements because:

- Current measurement circuits always have non-zero input capacitance, i.e. $C_{in} > 0$
- Infinite R_{in} cannot be achieved with real circuits and materials
- Amplifiers used in the meter have input currents, i.e. $I_{in} > 0$
- The cell and the potentiostat create both a non-zero C_{shunt} and a finite R_{shunt}

Additionally, basic physics limits high impedance measurements via Johnson noise, which is the inherent noise in a resistance.

Johnson Noise in Z_{cell}

Johnson noise across a resistor represents a fundamental physical limitation. Resistors, regardless of composition, demonstrate a minimum noise for both current and voltage, per the following equation:

$$E = (4 k T R \delta F)^{1/2}$$

$$I = (4 k T \delta F / R)^{1/2}$$

where:

k = Boltzman's constant 1.38×10^{-23} J/K

T = temperature in K

δF = noise bandwidth in Hz

R = resistance in ohms.

For purposes of approximation, the Noise bandwidth, δF , is equal to the measurement frequency. Assume a 10^{11} ohm resistor as Z_{cell} . At 300 K and a measurement frequency of 1 Hz this gives a voltage noise of 41 μV rms. The peak to peak noise is about 5 times the rms noise. Under these conditions, you can make a voltage measurement of ± 10 mV across Z_{cell} with an error of about $\pm 2\%$. Fortunately, an AC measurement can reduce the bandwidth by integrating the measured value at the expense of additional measurement time. With a noise bandwidth of 1 mHz, the voltage noise falls to about 1.3 μV rms.

Current noise on the same resistor under the same conditions is 0.41 fA. To place this number in perspective, a ± 10 mV signal across this same resistor will generate a current of ± 100 fA, or again an error of up to $\pm 2\%$. Again, reducing the bandwidth helps. At a noise bandwidth of 1 mHz, the current noise falls to 0.012 fA.

With E_s at 10 mV, an EIS system that measures 10^{11} ohms at 1mHz is about 3 decades away from the Johnson noise limits. At 0.1 Hz, the system is close enough to the Johnson noise limits to make accurate measurements impossible. Between these limits, readings get progressively less accurate as the frequency increases.

In practice, EIS measurements usually cannot be made at high enough frequencies that Johnson noise is the dominant noise source. If Johnson noise is a problem, averaging reduces the noise bandwidth, thereby reducing the noise at a cost of lengthening the experiment.

Finite Input Capacitance

C_{in} in Figure 6-1 represents unavoidable capacitances that always arise in real circuits. C_{in} shunts R_m , draining off higher frequency signals, limiting the bandwidth that can be achieved for a given value of R_m . This calculation shows at which frequencies the effect becomes significant. The frequency limit of a current measurement (defined by the frequency where the phase error hits 45°) can be calculated from:

$$f_{\text{RC}} = 1 / (2 \omega R_m C_{\text{in}})$$

Decreasing R_m increases this frequency. However, large R_m values are desirable to minimize the effects of voltage drift and voltage noise in the I/E converter's amplifiers.

A reasonable value for C_{in} in a practical, computer controllable low current measurement circuit is 100 pF. For a 3 nA full scale current range, a practical estimate for R_m is 10^7 ohms.

$$f_{\text{RC}} = 1 / 6.28 (1 \times 10^7) (100 \times 10^{-12}) \approx 160 \text{ Hz}$$

In general, one should stay two decades below f_{RC} to keep phase shift below one degree. The uncorrected upper frequency limit on a 30 nA range is therefore around 1.6 Hz.

One can measure higher frequencies using the higher current ranges (i.e. lower impedance ranges) but this would reduce the total available signal below the resolution limits of the "voltmeter". This then forms one basis of statement that high frequency and high impedance measurements are mutually exclusive.

Software correction of the measured response can also be used to improve the useable bandwidth, but not by more than an order of magnitude in frequency.

Leakage Currents and Input Impedance

In Figure 6-1, both R_{in} and I_{in} affect the accuracy of current measurements. The magnitude error due to R_{in} is calculated by:

$$\text{Error} = 1 - R_{\text{in}} / (R_m + R_{\text{in}})$$

For R_m equal to 10^7 ohms, an error $< 1\%$ demands that R_{in} must be $> 10^9$ ohms. PC board leakage, relay leakage, and measurement device characteristics lower R_{in} below the desired value of infinity.

A similar problem is the finite input leakage current I_{in} into the voltage measuring circuit. It can be leakage directly into the input of the voltage meter, or leakage from a voltage source (such as a power supply) through an insulation resistance into the input. If an insulator connected to the input has a 10^{12} ohm resistance between +15 volts and the input, the leakage current is 15 pA. Fortunately, most sources of leakage current are DC and can be tuned out in impedance measurements. As a rule of thumb, the DC leakage should not exceed the measured signal by more than a factor of 10.

The Series G uses an input amplifier with an input current of around 5 pA. Other circuit components may also contribute leakage currents. You therefore cannot make absolute current measurements of very low pA currents with the PCI4. In practice, the input current is approximately constant, so current differences or AC current levels of less than one pA can often be measured.

Voltage Noise and DC Measurements

Often the current signal measured by a potentiostat shows noise that is not the fault of the current measurement circuits. This is especially true when you are making DC measurements. The cause of the current noise is noise in the voltage applied to the cell.

Assume that you have a working electrode with a capacitance of 1 μ F. This could represent a passive layer on a metal specimen. The impedance of this electrode, assuming ideal capacitive behavior, is given by

$$Z = 1/j\omega C$$

At sixty Hertz, the impedance magnitude is about 2.5 k Ω .

Apply an ideal DC potential across this ideal capacitor and you get no DC current.

Unfortunately, all potentiostats have noise in the applied voltage. This noise comes from the instrument itself and from external sources. In many cases, the predominant noise frequency is the AC power line frequency.

Assume a realistic noise voltage, V_n , of 10 μ V (this is lower than the noise level of most commercial potentiostats). Further, assume that this noise voltage is at the US power line frequency of 60 Hz. It will create a current across the cell capacitance:

$$I = V_n/Z \approx 4 \text{ nA}$$

This rather large noise current will prevent accurate DC current measurement in the pA ranges.

In an EIS measurement, you apply an AC excitation voltage that is much bigger than the typical noise voltage, so this is not a factor.

Shunt Resistance and Capacitance

Non-ideal shunt resistance and capacitance arise in both the cell and the potentiostat. Both can cause significant measurement errors.

Parallel metal surfaces form a capacitor. The capacitance rises as either metal area increases and as the separation distance between the metals decreases.

Wire and electrode placement have a large effect on shunt capacitance. If the clip leads connecting to the working and reference electrodes are close together, they can form a significant shunt capacitor. Values of 5 pF

are common. This shunt capacitance cannot be distinguished from "real" capacitance in the cell. If you are measuring a paint film with a 100 pF capacitance, 5 pF of shunt capacitance is a very significant error.

Shunt resistance in the cell arises because of imperfect insulators. No material is a perfect insulator (one with infinite resistance). Even Teflon™, which is one of the best insulators known, has a bulk resistivity of about 10^{14} ohm-cm. Worse yet, surface contamination often lowers the effective resistivity of good insulators. Water films can be a real problem, especially on glass.

Shunt capacitance and resistance also occur in the potentiostat itself. The Series G Potentiostat Mode specifications in Appendix A contain equivalent values for the potentiostat's R_{shunt} and C_{shunt} . These values can be measured by an impedance measurement with no cell.

In most cases, the cell's shunt resistance and capacitance errors are larger than those from the potentiostat.

Hints for System and Cell Design

The following hints may prove helpful.

Faraday Shield

A Faraday shield surrounding your cell is mandatory for very low level measurements. It reduces both current noise picked up directly on the working electrode and voltage noise picked up by the reference electrode.

A Faraday shield is a conductive enclosure that surrounds the cell. The shield can be constructed from sheet metal, fine mesh wire screen, or even conductive plastic. It must be continuous and completely surround the cell. Don't forget the areas above and below the cell. All parts of the shield must be electrically connected. You will need an opening in the shield large enough to allow the Series G cell cable to enter the shield.

The shield must be electrically connected to the Series G's floating ground terminal.

An additional connection of both the shield and the PCI4 floating ground to an earth ground may also prove helpful.

NOTE: Only connect the Series G floating ground to earth ground if all conductive cell components are well isolated from earth ground. A glass cell is usually well isolated. An autoclave is generally not well isolated.

Avoid External Noise Sources

Try to keep your system away from electrical noise sources. Some of the worst are:

- Fluorescent lights
- Motors
- Radio transmitters
- Computers and computer monitors

Try to avoid AC powered or computerized apparatus within your Faraday shield.

Cell Cable Length and Construction

The Series G is shipped with a 1.5 meter cell cable. We also offer extended length cables as extra cost options.

Cell cables longer than 3 meters may result in degraded instrument performance. Increased noise and decreased stability both can occur. However, with most cells, the instrument will work acceptably with an extended cell cable, so our advice is go ahead and try it. As a rule, you should not attempt to use current interrupt IR compensation with cell cables longer than 5 meters.

We do not recommend that you use the Series G with any cables not supplied by Gamry Instruments. The Series G cable is not a simple cable like a typical computer cable. The Series G cable includes a number of individually shielded wires contained within an overall shield. We pay careful attention to issues such as shield isolation, isolation resistance, and capacitance.

If you do need a special cable, contact us with your requirements.

Lead Placement

Many experiments with the Series G involve cells with small capacitances, the value of which may be important.

In these cases, the capacitance between the Series G's cell leads can result in an error. The Series G alligator clips can have 5 pF or more of mutual capacitance if they are run alongside each other.

If you wish to avoid excessive capacitance.

- Place the leads as far apart as possible. Pay special attention to the working electrode lead.
- Have the leads approach the cell from different directions.
- Remove the alligator clips from the leads. In extreme cases you can replace the banana plugs and pin jack with smaller connectors. If you do so, be careful not to compromise the isolation between the center conductor and the shield.

The cell leads must not be moved during an experiment which measures small currents. Both microphonic and triboelectric effects can create spurious results when the cell cables are moved.

Cell Construction

If you need to measure small currents or high impedances, make sure that your cell construction does not limit your response.

A cell where the resistance between the electrodes is only 10^{10} ohms cannot be used to measure 10^{13} ohm impedances. In general, glass and Teflon are the preferred cell construction materials. Even glass may be a problem if it is wet.

You also must worry about C_{shunt} . Make the "inactive" portion of your electrodes as small as possible. Avoid placing electrodes close together or parallel with each other.

Reference Electrode

Keep your reference electrode impedance as low as possible. High impedance reference electrodes can cause potentiostat instability and excessive voltage noise pickup.

Try to avoid:

- Narrow bore or Vycor tipped Luggin capillaries.
- Poorly conductive solutions - especially in Luggin capillaries.
- Asbestos thread and double junction reference electrodes.

Reference electrodes often develop high impedances as they see use. Anything that can clog the isolation frit can raise the electrode impedance. Avoid using saturated KCL based references in perchlorate ion solutions.

Instrument Settings

There are several things to remember in setting up a very sensitive experiment.

- In EIS, use the largest practical excitation. Don't use a 10 mV excitation on a coated specimen that can handle 100 mV without damage.
- Avoid potentials where large DC currents flow. You cannot measure 1pA of AC current on top of 1 mA of DC current.

EIS Speed

In EIS, do not expect the Series G to measure 10^{10} ohm impedances at 1 kHz. Many of the factors listed above limit the performance.

As a rule of thumb, the product of Impedance, Z , times frequency, f , must be less than 10^9 Ω Hz for good EIS measurements with a Series G.

$$Z \cdot f < 10^9 \Omega\text{Hz}$$

Ancillary Apparatus

Do not use the Series G with ancillary apparatus connected directly to any of the cell leads. Ammeters and voltmeters, regardless of their specifications, almost always create problems when connected to the Series G cell leads.

Floating Operation

The Series G is capable of operation with cells where one of the electrodes or a cell surface is at earth ground. Examples of earth grounded cells include: autoclaves, stress apparatus, pipelines, storage tanks and battleships. The Series G's internal ground is allowed to float with respect to earth ground when it works with these cells, hence the name floating operation.

Instrument performance can be substantially degraded when the Series G is operated in a floating mode. The instrument specifications only apply on isolated cells with the Series G earth ground referenced (not floating).

Chapter 6 -- Measurement of Small Signals -- Floating Operation

Special precautions must be taken with the cell connections when the Series G must float. Make sure that all the cell connections are isolated from earth ground. In this case, even the floating ground terminal of the Series G must be kept isolated.

Finally, most ancillary apparatus connected to the cell of the Series G must be isolated. External voltmeters, ammeters, FRA's etc. must be isolated. This includes devices connected to the monitor connectors located on the Series G Controller board mini-panel.

Appendix A -- Series G 300 Specifications

Control Amplifier

Compliance Voltage	> ± 20 volts @ 150 mA
Output Current	> ± 300 mA
Unity Gain Bandwidth (software selectable)	> 1 MHz, > 200 kHz, > 90 kHz, > 20 kHz
Slew Rate (software selectable)	> 50 V/ μ sec, > 10 V/ μ sec, > 5 V/ μ sec, > 1 V/ μ sec

Differential Electrometer

Input Impedance	> 10^{12} Ω in parallel with 5 pF
Input Current	< 10 pA
Bandwidth (-3dB)	> 4 MHz
CMRR	> 100 dB (DC to 2 kHz), >60 dB @ 100 kHz

Voltage Measurement

Full Scale Ranges	± 30 V (± 12 V usable), ± 3 V, ± 300 mV, ± 30 mV
Resolution(16 Bits)	1 mV/bit, 100 μ V/bit, 10 μ V/bit,, 1 μ V/bit
DC Accuracy	$\pm 0.3\%$ Range ± 1 mV
Offset Range	± 12 V with 1.5 mV resolution

Current Measurement

Analog Full Scale Ranges	± 3 nA to ± 300 mA in decades
Controller Board Gains	1, 10, 100
Resolution (16 bits)	0.1 pA/bit to 10 μ A/bit
Offset Range	± 4 X full scale (only 2X full scale is useful)
DC Accuracy (with 1X Controller Board Gain)	$\pm 0.3\%$ range ± 50 pA
Bandwidth (-3 dB)	> 500 kHz (300 μ A—300 mA full scale)
	> 100 kHz (30 μ A full scale)
	> 10 Hz (3nA full scale)

Auxiliary A/D Input (see Appendix E)

Range	± 3 volts differential
Bandwidth	20 Hz
Input Impedance	100 k Ω

NOTES:

1. All specifications subject to change without notice
2. Offset specifications apply after software calibration

Auxiliary D/A Output

Range	± 5 volts or 0 to 10 volts
Resolution	2.5 mV

Environmental

Operating Temperature	0-70 °C (inside computer)
Specification Temperature	25 °C

Potentiostat Mode

Applied E Range	± 11 volts
Accuracy	± 2 mV $\pm 0.3\%$ of setting
DC Bias	± 8 V
Scan Ranges	± 6.4 V, ± 1.6 V, and ± 0.4 V
Resolution	200 μ V/bit, 50 μ V/bit, 12.5 μ V/bit
Drift	< 30 μ V/C
Noise and Ripple	< 20 μ V rms (1Hz - 10 kHz)

Galvanostat Mode

Applied i range	\pm full scale current (no 3 nA range)
DC accuracy	$\pm 0.3\%$ full scale
Scan Ranges	$\pm 2X$ full scale current

Current Interrupt

Measurement Type	(sample 2 points on decay, extrapolate)
Cell Switching Time	< 1 μ sec (1 k Ω cell)
Minimum Interrupt Time	15 μ sec
Maximum Interrupt Time	64 msec

A/D converter

Resolution	16 bits
Accuracy	0.1% of full scale
Timing	50 μ sec to 600 sec

General

Power	40 W maximum < 1 A at +12 V < 5.5 A at +5 V < 0.08 A at -5 V < 0.02 A at -12 V
Leakage i (floating, earthed Working Electrode)	< 3 nA @ DC

Appendix B -- Series G 750 Specifications

Control Amplifier

Compliance Voltage	> $\pm 15\text{V}$ @ 15 mA, > $\pm 12\text{ volts}$ @ 500 mA
Output Current	> $\pm 750\text{ mA}$
Unity Gain Bandwidth (software selectable)	> 1 MHz, > 200 kHz, > 90 kHz, > 20 kHz
Slew Rate (software selectable)	> 50 V/ μsec , > 10 V/ μsec , > 5 V/ μsec , > 1 V/ μsec

Differential Electrometer

Input Impedance	> $4 \times 10^{11} \Omega$ in parallel with 5 pF
Input Current	< 10 pA
Bandwidth (-3dB)	> 4 MHz
CMRR	> 100 dB (DC to 2 kHz), > 60 dB @ 100 kHz

Voltage Measurement

Full Scale Ranges	$\pm 30\text{V}$ ($\pm 9\text{ V}$ usable), $\pm 3\text{V}$, $\pm 300\text{ mV}$, $\pm 30\text{ mV}$
Resolution(16 Bits)	1 mV/bit, 100 μV /bit, 10 μV /bit, 1 μV /bit
DC Accuracy	$\pm 0.3\%$ Range $\pm 1\text{mV}$
Offset Range	$\pm 12\text{ V}$ with 1.5 mV resolution

Current Measurement

Analog Full Scale Ranges	$\pm 7.5\text{ nA}$ to $\pm 750\text{ mA}$ in decades
Controller Board Gains	1, 10, 100
Resolution (16 bits)	0.25 pA/bit to 25 μA /bit
Offset Range	$\pm 4\text{X}$ full scale (only 2X full scale is useful)
DC Accuracy (with 1X Controller Board Gain)	$\pm 0.3\%$ range $\pm 50\text{ pA}$
Bandwidth (-3 dB)	> 500 kHz (75 μA —750 mA full scale)
	> 20 kHz (7.5 μA full scale)
	> 20 Hz (7.5 nA full scale)

Auxiliary A/D Input (see Appendix E)

Range	$\pm 3\text{ volts}$ differential
Bandwidth	20 Hz
Input Impedance	100 k Ω

NOTES:

1. All specifications subject to change without notice
2. Offset specifications apply after software calibration

Auxiliary D/A Output

Range	± 5 volts or 0 to 10 volts
Resolution	2.5 mV

Environmental

Operating Temperature	0-70 °C (inside computer)
Specification Temperature	25 °C

Potentiostat Mode

Applied E Range	± 11 volts
Accuracy	± 2 mV $\pm 0.3\%$ of setting
DC Bias	± 8 V
Scan Ranges	± 6.4 V, ± 1.6 V, and ± 0.4 V
Resolution	200 μ V/bit, 50 μ V/bit, 12.5 μ V/bit
Drift	< 30 μ V/C
Noise and Ripple	< 20 μ V rms (1Hz - 10 kHz)

Galvanostat Mode

Applied i range	\pm full scale current (no 3 nA range)
DC accuracy	$\pm 0.3\%$ full scale
Scan Ranges	$\pm 2X$ full scale current

Current Interrupt

Measurement Type	(sample 2 points on decay, extrapolate)
Cell Switching Time	< 1 μ sec (1 k Ω cell)
Minimum Interrupt Time	15 μ sec
Maximum Interrupt Time	64 msec

A/D converter

Resolution	16 bits
Accuracy	0.1% of full scale
Timing	50 μ sec to 600 sec

General

Power	45 W maximum < 1 A at 12 volts < 6.5 A at +5 V < 0.08 A at -5 V < 0.02 A at -12 V
Leakage i (floating, earthed Working Electrode)	< 1 nA @ DC

Appendix C -- Changing Series G Settings

Overview

Your Series G Potentiostat is fully compliant with the Windows Plug & Play system. Series G resources (interrupt settings, register addresses) are not assigned using hardware switches or jumpers. Instead, the Windows Device Manager chooses resource assignments. The settings chosen by the Device Manager can be reviewed by selecting Windows Control Panel, Device Manager from the Windows Start Menu.

NOTE: The Device Manager will only show a Series G if the hardware is actually installed in the computer and is minimally functional. In the time period after installing the software but prior to hardware installation, a Series G will not be seen in the Windows Device Manager, even though its driver has been installed.

The Gamry Framework requires a "GAMRY5.INI" file. This file is used to name the potentiostats in the system. Turnkey systems are configured appropriately for the items you have purchased with that system. User installed systems should be configured using the Setup programs that come with Gamry Instruments' Windows based application software.

This appendix is used when manual configuration is convenient or required. It includes:

- a description of the "GAMRY5.INI file,
- instructions for changing the Auxiliary D/A ranges,
- instructions for changing settings for the Auxiliary A/D input.

About the "GAMRY5.INI" File

The "GAMRY5.INI" file contains system configuration information. This file is used to:

- Store Potentiostat names.
- Store auxiliary equipment configurations (multiplexers and temperature controllers).
- Authorize use of a specific potentiostat by specific software packages.
- Store calibration data for each potentiostat.
- Store scaling factors for system D/A and A/D converters.
- Store software configuration information.

The "GAMRY5.INI" file is an ASCII file that is divided into sections identified by a section name in square brackets (e.g. [EIS300]). Each section contains settings for a specific aspect of the system.

You can modify the file using an ASCII editor or a word processor in a non-document mode (a mode with no formatting codes in the text). The Windows Notepad accessory is a convenient ASCII editor.

The copy of "GAMRY5.INI" actually used by the software must be located in the Windows directory (normally C:\WINDOWS). The Setup programs provided with Gamry Instruments' software either install "GAMRY5.INI" in the correct directory or modify an existing file in this location.

A portion of a typical "GAMRY5.INI" file is shown in Figure C-1. Only some of the information required for Series G configuration is shown. A complete "GAMRY5.INI" file is longer than this example.

In Figure C-1, the 1st line is called a section identifier. The name of the section is enclosed in square brackets, e.g. [Framework5]. The [Framework5] section extends to the next section identifier [PCI4750-12345]. The [Framework5] section contains configuration information for the Gamry Framework program. This section is required in all "GAMRY5.INI" files that configure a Gamry Framework System.

"GAMRY5.INI" normally contains potentiostat calibration information (not shown). Each potentiostat's data are in that potentiostat's section. You do not normally have to edit the calibration data which is automatically created and updated by the calibration routine built into the software.

The [PCI4yyy-xxxx] section also contains the AUXDACRES field which you may need to change. See below for details. In your installation, the "yyy" will be replaced with either "300" or "750" for the model of your potentiostat. The "xxxx" will be replaced with your controller board's serial number.

Figure C-1
Portion of a Typical "GAMRY5.INI" File

```
[Framework5]
Version=5.0
SystemDir=C:\Program Files\Gamry Instruments\Framework 5\
ScriptDir=C:\Program Files\Gamry Instruments\Framework 5\Scripts\
PACKAGE0=DC105

[PCI4G750-12345]
CMSDriver=PCI4.DLL
LABVIEWDriver=PCI4LV.DLL
BaseAddress=
PstatClass=PCI4
FraCurveClass=FRACURVE4
BoardNo=1
SerialNo=12345
Label=My PCI4
AuthDC105=1234567890
AUXDACRES=2.5E-3,0
...

[ECM8_1]
TYPE=ECM 8
LABEL=My ECM8
PORT=2
MODE=COM2:9600,N,8,1
SerialNo=12345

[DC105]
NAME=DC Corrosion
EXPT1=Corrosion Behavior Diagram,Corrosion Behavior Diagram.exp
EXPT2=Corrosion Potential,Corrosion Potential.exp
...
```

Using Notepad to alter "GAMRY5.INI"

It is often convenient to use an ASCII editor to make small changes in the "GAMRY5.INI" file. The Notepad accessory included with Windows is a useful ASCII editor. Please read the Microsoft documentation for full instructions about using Notepad.

Removing a Potentiostat from an Existing System

To remove a potentiostat from a system you need to physically remove the card set from the computer. You do not need to make changes to the "GAMRY5.INI" file.

Interrupt Level Setting

Most peripheral devices in an AT compatible computer coordinate I/O (input/output) operations with the microprocessor by means of hardware interrupts. An interrupt is a request by a device that the computer suspend the program it's currently running, and perform an I/O operation. The Series G Potentiostat generates an interrupt at the end of each data point.

All PCI devices in a computer generally share one interrupt level.

Register Address

The Series G Potentiostat card set, like all IBM compatible expansion cards, has hardware registers that the computer must be able to access. These registers are located at a specific address in the memory address space of the computer's microprocessor. Addresses are expressed in the hexadecimal numbering system where the digits are 1,2,3,4...8,9,A,B,C,D,E,F. We will always precede a hexadecimal number with the prefix 0x, e.g. 0x22F.

The Series G requires a 64 byte memory space for its hardware control registers. The Windows Device Manager will show several address spaces for a PCI4 device. The third space is the I/O registers for the Series G. The other memory spaces are used in PCI configuration.

Changing the Auxiliary Analog Output Scaling

A setting in the "GAMRY5.INI" file allows you to change the scaling of the D/A converter used to generate the auxiliary analog output.

The default setting configures this D/A converter for a bi-polar output of ± 5 volts with a bit resolution of 2.5 mV/bit. You can switch to a uni-polar output of 0 to 10 volts, still with a bit resolution of 2.5 mV/bit.

The D/A scaling is controlled by a field in the [PCI4G ___ - ___] section of the "GAMRY5.INI" file. This field has the form:

```
AUXDACRES=2.5E-3,0
```

The final 0 indicates that the scaling is bipolar. If this digit was a 1, the scaling would be uni-polar.

Appendix D -- I/O Connections for the Series G

The Series G Potentiostat has a number of connectors that allow it to communicate electronically with the world outside of the computer. This appendix describes these connectors and the signals available on their pins.

CE Compliance, EMI and Cable Shielding

The European Community has instituted standards limiting radio frequency interference (EMI) from electronic devices. Compliance with these standards requires that special shielded cell cable connections are used in all CE compliant systems.

The Series G is electrically floating. Its connections to the electrochemical cell under test are not connected in any way to earth ground. While this is advantageous for testing many types of electrochemical systems, it can result in significant radio frequency (RF) interference.

The interior of a personal computer is filled with RF energy. The computer's earth grounded enclosure prevents the escape of this energy.

Now consider the case of the Series G. It is a floating potentiostat built on a board that mounts inside the computer. The floating circuits inside the computer act as an antenna, picking up RF energy. The potentiostat's cables can then radiate this energy outside of the enclosure, generating RF emissions.

The cell cable supplied with your Series G has an overall shield that is connected to the computer's chassis ground. This shield acts as an extension of the computer's chassis, keeping the RF emission level lower than the limits in the regulations. Note that use of cell cables not designed and sold by Gamry Instruments can result in excessive RF radiation.

Grounds and the Series G Potentiostat

The Series G has been specially designed for operation with cells in which one of the electrodes is connected to earth ground. Earthed electrodes often occur in field experiments, because metal pipelines and structures are generally earth grounded. In the lab, experiments involving either autoclaves or stress apparatus often have earth grounded electrodes. Conventional potentiostats do not work properly or safely in these experiments. In the typical glass or plastic test cell, none of the electrodes are earth grounded, so no grounding problems arise.

The Series G analog circuits are electrically isolated from the computer's chassis which is at earth ground. Another name for circuits that are isolated is "floating". The isolation is accomplished by means of optical isolators and transformers.

Extraordinary measures were taken in the design of the Series G to maximize the degree of isolation. However, you can still measure higher impedances and smaller currents on cells that are not earth grounded than you can on earth grounded cells.

If you are working with earth grounded electrodes, ground connections for your potentiostat are critical. You must be careful that the floating ground connection on all Series G connectors does not get connected to earth ground.

We strongly recommend that you use an earth grounded Faraday shield whenever you are measuring small currents. See Chapter 6 for a discussion of Faraday shields.

The Cell Connector

The Cell Connector is a 9 pin female D shaped connector on the Potentiostat Card. This connector is used to connect the Series G to the electrochemical cell being tested. Normally you make your cell connections using the cell cable that Gamry provides you. See Chapter 3 for a description of how the cell connections are made using the standard cell cable.

The metal shell of this D connector is connected to the computer's chassis (earth) ground. This is the source of the chassis ground (earth ground) contact in the cable.

In a few cases, you will find the standard cell cable is inadequate for your needs. You may find that you need to modify a cell cable or make a special purpose cable. By far, the easiest changes involve modifying a standard cell cable. We can sell you an extra cell cable for this purpose. If you do need to make a completely new cable, the pin out of the cell connector is given in Table D-1. We recommend that you use shielded cables for all the cell connections. Coax cable is preferred. Connect the shield of the coax to the pin shown in Table D-1 on the Series G end, and leave the shield open on the cell end. Make sure that all pins are isolated from each other.

Cell cables longer than 3 meters may result in degraded instrument performance. Increased noise and decreased stability both can occur. However, with most cells, the instrument will work acceptably with an extended cell cable, so our advice is go ahead and try it.

These limitations are known to occur when cables other than Gamry's 1.5 meter cell cable are used.

- You should not attempt to use current interrupt IR compensation with cell cables longer than 5 meters,
- In general, EIS with non-standard cables should be avoided. Errors are largest when the system being measured is near the limits of the potentiostat's accuracy contour diagram.

**Table D-1
Cell Connector**

Pin	Signal Name	Use
1	Working Sense	Normally connected to the working electrode. This is the high impedance negative input of the differential electrometer. A 260 Ω series resistor at the cell end of the coax cable on this input is required for system stability.
2	WS Shield	A driven shield for the working sense input. Normally connected to the outer shield of a coax cable on pin 1. Do not ground this pin!
3	Working Electrode	The input to the Series G current measurement circuit. The voltage on this point can be ± 1.5 volt with respect to floating ground.
4	WE Shield	A driven shield for the working electrode input. Normally connected to the outer shield of a coax cable on pin 3. Do not ground this pin!
5	Ground	The Series G's floating ground. Should also be used to provide a shield for the counter electrode if one is used.
6	Ref Electrode	Normally connected to the reference electrode. High impedance positive input of the differential electrometer. A 260 Ω series resistor at the cell end of the coax cable on this input is required for system stability.
7	Ref Shield	A driven shield for the reference electrode input. Normally connected to the outer shield of a coax cable on pin 6. Do not ground this pin!
8	Counter Sense	Input to a voltage follower. Normally connected to the cell's counter electrode. Used in ZRA mode to develop a feedback signal.
9	Counter Electrode	The output of the Series G control amplifier. Normally connected to the counter electrode of the electrochemical cell being tested.

Aux A/D Input

This input allows you to measure an externally generated voltage signal. The Aux A/D input is the bottom BNC connector on the Series G Controller Card's mini-panel. It is located just below a 15-pin high density D connector.

See Figure D-1 for the identity of all the BNC connectors on the Series G's mini-panels.

Uses of this input include the measurement of temperature, strain, or other non-electrochemical parameters. This input is fully differential, with about 80 dB of common mode rejection. Be careful though, the allowed common mode voltage range is only ± 11 volts with respect to the floating ground. Voltages outside this range should not damage the instrument but they cannot be measured.

The scaling on this signal is ± 3 volts full scale, resulting in $\pm 30,000$ counts on the A/D converter.

The signal conditioning circuitry on this input includes jumpers to select both input impedance and bandwidth. See Appendix E for a description of these jumpers.

Control Signal Input

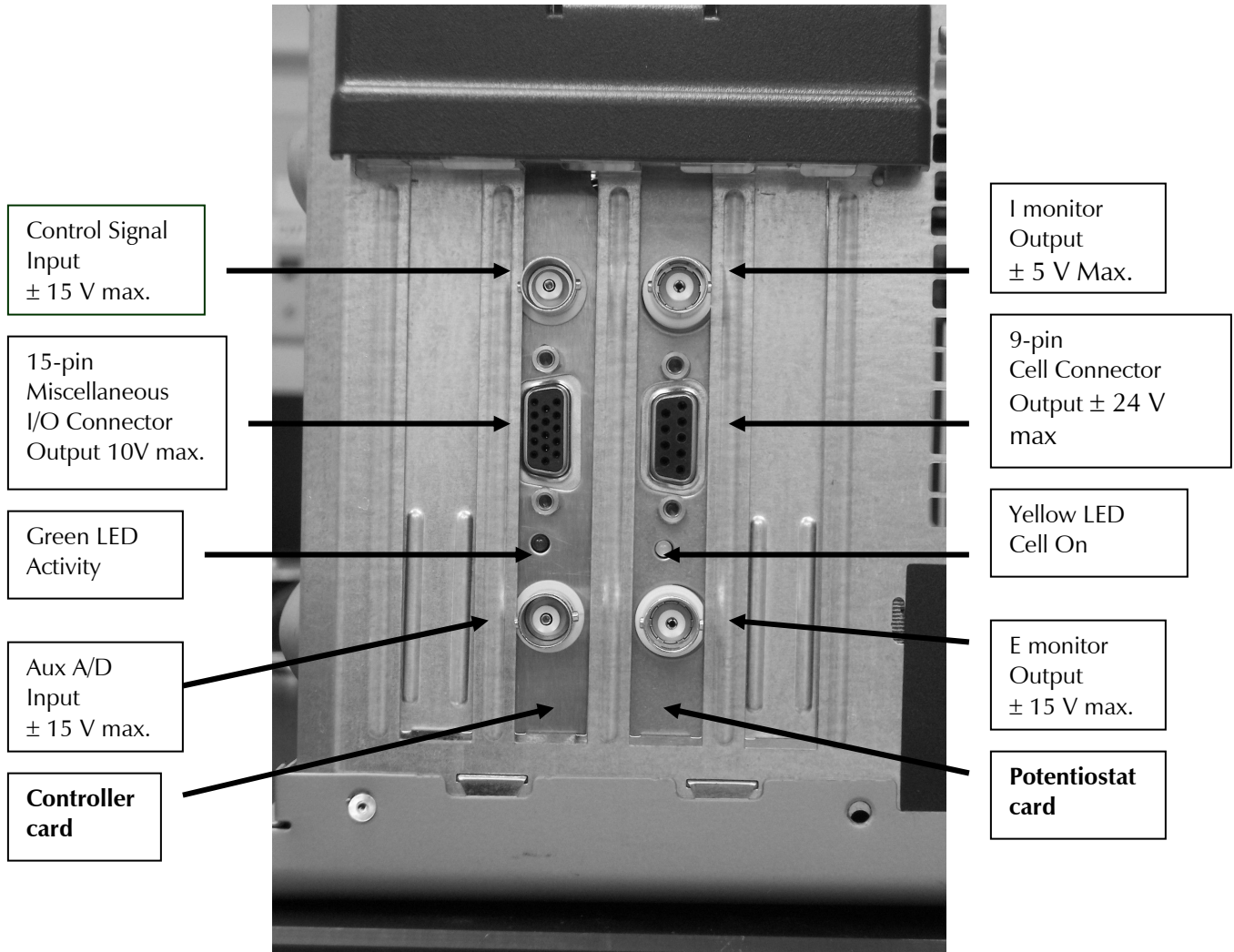
The Control Signal Input allows you to inject a signal into the Series G's potential or current control circuits. One use for this input is modulation of the applied voltage or current.

This input is the upper BNC connector on the Controller Card mini-panel. It is located just above a 15-pin high density D connector.

Warning: The shell of this BNC connector is connected to the Series G's floating ground. Connecting an earth ground referenced signal source to this connector will cause problems if you are using the Series G with a cell that has an earth grounded electrode.

See Figure D-1 for the identity of all the BNC connectors on the Series G's mini-panels.

Figure D-1
BNC Connectors on the PCI4 Controller Card Mini-panel
Rear View of Series G Cards in a Computer



In controlled potential mode (and ZRA mode), the potential applied to the cell is the sum of the applied potential and the control input voltage. For example, if the programmed voltage is +2 volts, and +1 volt is applied to the control input, the cell voltage ($E_{\text{work}} - E_{\text{ref}}$) will be +3 volt. The input impedance of this input is 3 k Ω . Adding a control resistor, R_{ext} , in series with the input allows you to alter the scaling factors. The equation describing the relationship is:

$$V_{\text{cell}} = V_{\text{sig}} \times 3\text{k}\Omega / (R_{\text{ext}} + 3\text{k}\Omega)$$

V_{sig} is the signal applied to the resistor and V_{cell} is the resulting cell voltage. If 27 k Ω is added in series, a 1 volt signal will be attenuated to cause only a 100 mV cell voltage.

In controlled current mode, you will get full scale current for 3 volts applied to this connector. The current will vary with the current range. For example, on the 30 mA range, 1.5 volts will give you 15 mA of cell current. The sign is such that a positive input gives you a cathodic current.

I Monitor Output

This output reflects the cell current signal from the Series G's current to voltage converter. The I Monitor output is the upper BNC connector on the PCI4 Potentiostat Card's mini-panel. It is located just above the 9-pin D cell connector.

See Figure D-1 for the identity of all the BNC connectors on the Series G's mini-panels.

WARNING: The shell of this BNC connector is connected to the Series G's floating ground. Connecting an earth ground referenced signal source to this connector will cause problems if you are using the Series G with a cell that has an earth grounded electrode.

NOTE: Previous PC4 family instruments has a somewhat different current signal output. They output an offset, filtered, and gained current signal. This signal has proven to be less useful than the "raw" current signal, so that is the signal output by the Series G.

This output has a range of $\pm 3\text{V}$, with 3 volts corresponding to full-scale on the current range in use. The polarity is defined so that positive voltages indicate cathodic current. If the voltage on this output becomes more positive as a result of changes in the cell potential, the cell current has become more cathodic.

V Monitor Output

This output reflects the cell voltage signal from the Series G's differential electrometer. The V monitor output is the lower BNC connector on the PCI4 Potentiostat Card's mini-panel. It is located just below the 9-pin D cell connector.

WARNING: The shell of this BNC connector is connected to the Series G's floating ground. Connecting an earth ground referenced signal source to this connector will cause problems if you are using the Series G with a cell that has an earth grounded electrode.

NOTE: Previous PC4 family instruments has a somewhat different voltage signal output. They output an offset, filtered, and gained voltage signal. This signal has proven to be less useful than the "raw" voltage signal, so that is the signal output by the Series G.

The scaling on this connector is one-to-one. The polarity is inverted -- the output is $V_{ref}-V_{work}$, not the more customary $V_{work}-V_{ref}$. If this signal becomes more positive, the cell voltage has become more cathodic.

Miscellaneous I/O Connector

This connector contains a number of chassis ground related signals. It is the miniature 15 pin female D shaped connector on the Series G Controller Card.

Be careful, the ground on this connector is not the Series G floating ground. Connecting the two grounds may lead to problems if you are using the Series G in a floating mode.

The auxiliary analog output, derived from a D/A converter, is on this connector. The scaling is normally 2.5 mV per bit, for a ± 5 volt full scale range. These ranges can be altered via the AUXDACRES field in the "GAMRY5.INI" file.

The pin out of this connector is shown in Table D-2.

Table D-2
Miscellaneous I/O Connector

Pin	Name	Use
1	Analog Output Low	The auxiliary output ground connection.
2	Analog Output High	The auxiliary output signal.
3	Sync In	Used in slave mode – starts data acquisition 2.2 k Ω input impedance
4	Sync Out	A 125 nsec TTL pulse output before the start of a data point 330 Ω output impedance
5	No connection	No connection
6	Ground	Digital ground
7	Digital Out 0	A TTL digital output- 330 Ω output impedance
8	Digital Out 1	A TTL digital output- 330 Ω output impedance
9	Digital Out 2	A TTL digital output- 330 Ω output impedance
10	Digital Out 3	A TTL digital output- 330 Ω output impedance
11	Digital In 0	A TTL digital input- 2.2 k Ω input impedance
12	Digital In 1	A TTL digital input- 2.2 k Ω input impedance
13	Digital In 2	A TTL digital input- 2.2 k Ω input impedance
14	Digital In 3	A TTL digital input- 2.2 k Ω input impedance
15	+5 Volts	Power- 100 mA maximum current

Appendix D -- I/O Connections for the Series G

Appendix E – Auxiliary A/D Input Characteristics

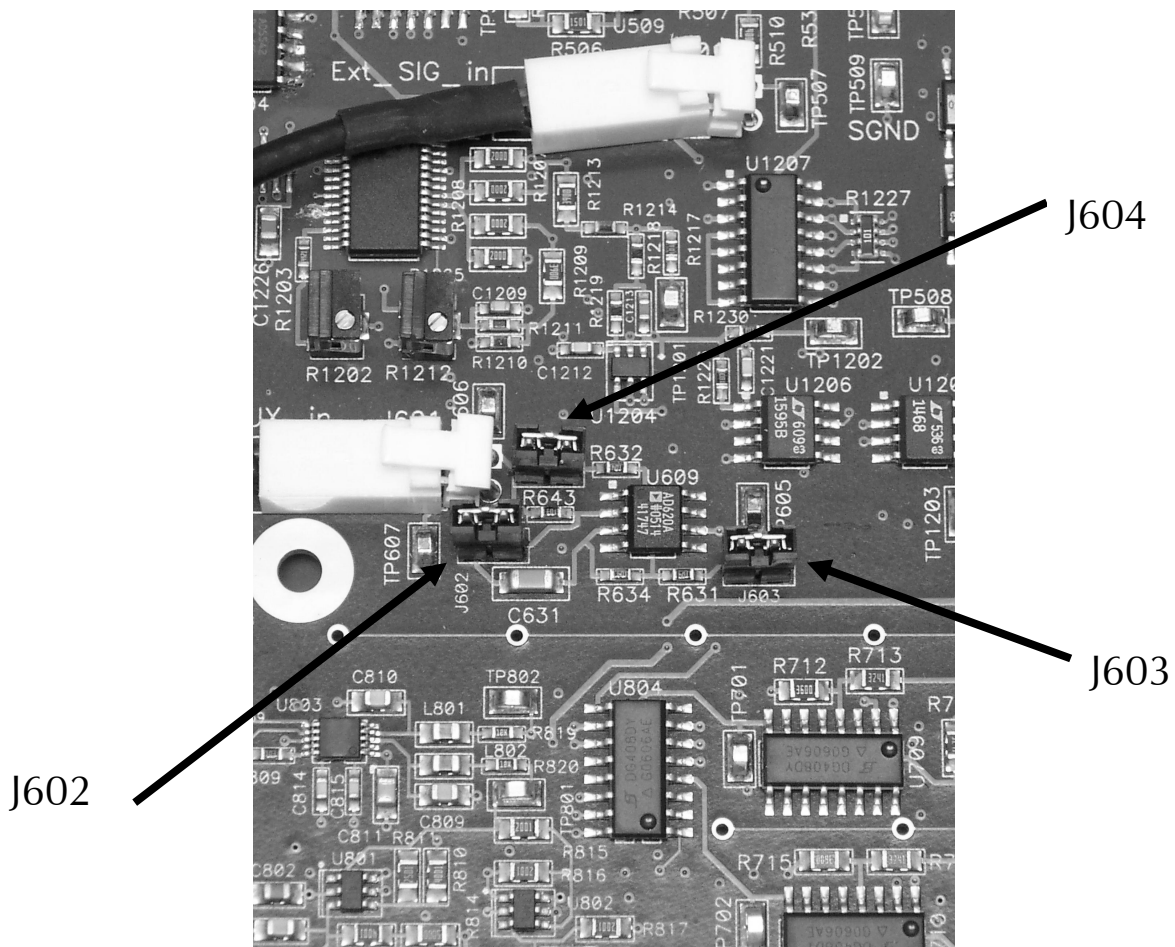
Overview

The Controller Card used in the Gamry Instruments Series G Potentiostat has jumpers that configure the input circuitry used for the Aux A/D function.

Jumper Identification

The three jumpers that configure the Aux A/D input are in a cluster located toward the right side of the Controller Card. The two coax cables that route analog inputs to the card enter the card near these jumpers. See the figure below for jumper locations.

Figure E-1
Auxiliary A/D Input Configuration Jumpers
View of Series G Controller Card



NOTE: A prototype board was used as the subject in the photograph above. The locations may have changed slightly on later revisions of the board.

Input Impedance Selection

Two jumpers are associated with the input impedance – J603 and J604. With J603 and J604 installed, the Aux A/D inputs have a 100 k Ω input impedance. This is the default setting. With the jumpers installed, the potentiostat can be calibrated without a cable on the input SMC connector.

With both J603 and J604 removed, the Aux A/D input impedance is 10 G Ω (typically). This setting is suitable for use with a high impedance source such as a reference electrode. If you have removed these jumpers, do not calibrate the potentiostat unless you have a cable connecting both Aux A/D inputs to floating ground.

Filter Selection

J602 controls filtering of the Aux A/D input. With J602 removed, there is no filtering on this input. With J602 in place (the default setting), a single pole RC filter is used to limit noise into the A/D. The nominal cutoff frequency of this filter is 20 Hz.

Note that source impedances greater than 1 k Ω will appreciably lower this cutoff frequency. When the Aux A/D input is driven by a source with an output impedance of 1 M Ω , the frequency cutoff will be less than 0.25 Hz.

Aux A/D Specifications

These specifications apply to all PCI4 boards:

Range	± 3.276 volts	
Input Impedance	100 k Ω (approx) or	J603 & J604 installed
	10 G Ω (typical)	J603 & J604 removed
Input Bias Current	< 10 nA	J603 & J604 removed
Filter Cutoff	20 Hz \pm 20%	J602 in place with Z _{source} < 1 k Ω

Appendix F – IR Compensation

IR compensation is often required in electrochemical testing. A 3-electrode potentiostat can only control (or measure) the potential between the working electrode and the reference electrode. This potential is not the potential drop of across the working electrode interface – which is generally what electrochemists are interested in.

One particularly nasty source of error is the uncompensated solution resistance, R_u . This is the portion of the cell's total solution resistance that is between the reference electrode sensing point and the working electrode. When a current, I , flows through the cell, the potential measured by the potentiostat is always in error by a potential ΔE where:

$$\Delta E = IR_u$$

Various methods are used to correct for this source of errors. For more information on this topic, see Gamry's Application Note entitled "Understanding IR Compensation" at www.gamry.com.

The Series G Potentiostat/Galvanostat/ZRA is capable of IR Compensation using two very different modes with very different characteristics.

The first method is current interrupt IR compensation. It is especially useful in slow experiments. It can be used when large changes in the current during the experiment require the use of automatic current range selection. Examples of experiments that can benefit from current interrupt IR compensation include CV on energy conversion devices (such as batteries, fuel cells and super capacitors) and corrosion tests.

The second method is positive feedback IR compensation. It is generally used during fast experiments where the current range is not changed during the test. One good example is fast CV to determine reaction kinetics.

Current Interrupt

Gamry's Application Note entitled "Understanding IR Compensation" at www.gamry.com deals primarily with current interrupt IR compensation. Current Interrupt IR compensation is shown as "CI" in experiments that offer IR compensation.

The Series G's hardware limits for current interrupt IR compensation are:

Interrupt Time	15 μ sec to 65.536 msec
Maximum ΔE	8.192 V

Note that the interrupt time is actually controlled by Gamry's Framework software. The time is dynamically varied depending on the current range in use.

While the Series G hardware can correct for IR errors up to 8.192 V, it is difficult to envision an electrochemical cell and experiment where a correction this large is realistic.

Positive Feedback

Positive feedback is a second method for iR compensation. It is usually used for iR compensation during experiments that are too fast for current interrupt iR compensation.

At the time this manual was written, Gamry has not yet written a through description of positive feedback iR compensation in an Application Note. A major revision of our Application Note entitled “Understanding iR Compensation” that treats positive feedback in some detail is planned.

Positive Feedback iR compensation is shown as “PF” in experiments that offer iR compensation. You must enter an estimated value for R_u before you can use positive feedback iR compensation.

Positive feedback iR compensation cannot be used in experiments in which the current range is changed during data acquisition.

The specification for positive feedback iR compensation on the Series G depend on the current range selected for the experiment. These are the specifications written in terms of the current range:

Equivalent R_m	3.0 V / Max current for selected range	
Maximum R_u	R_m	
R_u resolution	$R_m / 65536$	
Maximum ΔE	± 3.0 V	

For example, on the 3 mA current range:

Equivalent R_m	3.0 V / 3 mA	1 k Ω
Maximum R_u	3.0 V / 3 mA	1 k Ω
R_u resolution	1 k Ω / 65536	15.26 m Ω

While the Series G hardware can correct for iR errors up to 3.00 V, it is difficult to envision an electrochemical cell and experiment where a correction this large is realistic.

Appendix G – CE Certificate

Declaration of Conformity

This declaration is provided according to ISO/IEC 17050-1: 2004 and ISO/IEC 17050-2: 2004

Manufacturer's Name and Location:

Gamry Instruments
734 Louis Drive
Warminster, PA 18974
USA

This declaration is for the Gamry Instruments product models PCI4 Series G Product Series. This includes Series G/300, Series G/750, Series G control board, and any variations.

The declaration is based upon compliance with the following directives:

EMC Directive 89/336/EEC as amended by 92/31/EEC and 93/68/EEC.
Low Voltage Safety Directive 73/23/EEC as amended by 93/68/EEC.

The declaration is based upon product compliance with the following standards as defined in report number R0380-000 from Ergonomics, Inc. for safety analysis and report number R-2912P from Retlif Testing Laboratories, Inc. for EMC test and analysis.

EMC Standards	Title	
EN61326:2000 EMISSIONS	Electrical Equipment for Measurement, Control and Laboratory Use - EMC Requirements-Second Edition	
CISPR 16	Power Line Conducted Emissions	Pass
CISPR 16	Electric Field Radiated Emissions	Pass
IEC 61326 IMMUNITY		
EN 61000-4-2	Electrostatic Discharge	Pass Criteria C
IEC 61000-4-3	Radiated Field Immunity	Pass Criteria B
IEC 61000-4-4	Electrical Fast Transient Immunity (AC Power)	Pass Criteria A
IEC 61000-4-5	Surge Immunity	Pass Criteria A
IEC 61000-4-6	Power Line Conducted Immunity	Pass Criteria A
IEC 61000-4-11	Voltage Dips and Interrupts	Pass Criteria A

Low Voltage Directive Safety Standards	Title
EN 61010-1:2001	Safety requirements for electrical equipment for measurement, control and laboratory use, Part 1: General requirements.
EN 61010-2-081: 2003	Safety requirements for electrical equipment for measurement, control and laboratory use, Part 2 Particular requirements for automatic and semiautomatic laboratory equipment for analysis and other purposes



Signature

October 6, 2006

Date

Mr. Gregory A. Martinchek, PHD
Title: President
Gamry Instruments
734 Louis Drive
Warminster, PA 18974, USA

Formal signed declaration is on file at Gamry Instruments, Inc.

Certificate of Conformance

SUMMARY OF TEST RESULTS

The **Model PCI4G**, manufactured by **Gamry Instruments** of Warminster, Pennsylvania, configured as described herein, **COMPLIES WITH THE REQUIREMENTS SET FORTH IN EUROPEAN STANDARD IEC 61326: 2002-02 (EMISSIONS & IMMUNITY) AS STATED BELOW.**

A summary for each individual test is as follows:

IEC 61326 **EMISSIONS**

CISPR 16	- Power Line Conducted Emissions	PASS
CISPR 16	- Electric Field Radiated Emissions	PASS

IEC 61326 **IMMUNITY**

EN 61000-4-2	- ElectroStatic Discharge	PASS Criteria C
IEC 61000-4-3	- Radiated Field Immunity	PASS Criteria B
IEC 61000-4-4	- Electrical Fast Transient Immunity (AC Power)	PASS Criteria A
IEC 61000-4-5	- Surge Immunity	PASS Criteria A
IEC 61000-4-6	- Power Line Conducted Immunity	PASS Criteria A
IEC 61000-4-11	- Voltage Dips and Interrupts	PASS Criteria A



Comprehensive Index

[Framework5] Section in GAMRY5.INI, 7-6

alligator clip, 3-2
ancillary apparatus, 6-8
authorization codes, 2-11
autoclave, 7-9
Aux A/D Input, 7-11
Auxiliary Analog Output, 7-8
auxiliary electrode, 3-2

black banana
 longer, 3-2
blue cell lead, 3-1

calibration, 2-12
 data, 7-6
capacitive cells, 5-1
Card Identification, 2-2
CE Compliance, 1-1, 7-9
CE controller card, 2-3
CE power splitter, 2-4
cell cable, 3-1
 replacements and specials, 3-2
 ZRA connections, 3-2
cell connector
 pinout, 7-10
cell construction materials, 6-6
computer requirements, 2-1
computers - noise, 6-5
Control Signal Input, 7-12
conventions
 notational, 1-5
 positional, 2-2
counter electrode, 3-2

device manager, 2-10
Device Manager, 2-10
disk drive power, 2-4

earth ground, 3-2, 6-5, 6-7
EIS speed, 6-7
electrical noise, 6-5
electrons per second, 6-1
EMI, 7-9

Faraday shield, 3-2, 6-5
floating card, 1-2
floating ground, 3-2, 7-9, 7-12, 7-14, 7-15

floating operation, 6-7
fluorescent lights, 6-5
found new hardware, 2-5

Gamry Framework, 1-1
GAMRY5.INI, 2-12, 7-6
green cell lead, 3-1
grounds, 7-9

high frequency shunt, 5-3
hints, 6-5

I Channel Output, 7-14
I/O address, 7-8
I/O connections, 7-9
input capacitance, 6-1
input current, 6-1
input impedance, 6-1
input leakage current, 6-4
installation
 Controller Card, 2-4
interrupt level
 changing, 7-8

Johnson noise, 6-2

lead capacitance, 6-6
lead placement, 6-6
longer black banana plug, 3-2
Lugin capillaries, 6-7
Lugin capillary, 5-2

master/serf, 4-1
master/serf cable, 4-2
materials, 6-6
measurement system model, 6-1
membrane cell connections, 3-3
miscellaneous I/O connector, 7-15
motors, 6-5
MultEchem system, 4-1
Multiple Potentiostat Systems, 2-2, 2-9

noise, 6-4
Notepad, 7-6, 7-7

orange lead, 3-2
Orange lead, 3-1
oscillation, 5-1

PCI Compatibility, 2-2
Plug & Play, 2-3

radio transmitters, 6-5

Comprehensive Index

red cell lead, 3-2
reference electrode, 3-2
reference electrode impedance, 6-7
reference electrodes, 6-7
removing a card set, 7-7
ringing, 5-1

schematic, 1-3
Series G, 1-1, 7-19
Series G/300, 1-1
Series G/750, 1-1
shorter black lead, 3-2
small signals, 6-1
stability, 5-1
static discharges, 2-3
stress apparatus, 7-9

turn-key system, 2-1

V Channel Output, 7-14
voltage noise, 6-4

white cell lead, 3-2
Windows Update, 2-6
working electrode, 3-1

ZRA
cell connections, 3-2